

BROWN JORDAN

Mastering the art of outdoor living since 1945.

Brown Jordan Heritage and Advantage

It all began when California native and all-round visionary Robert Brown dreamed of a new kind of leisure furniture that could stand up to the elements and be used outdoors all year long, a groundbreaking proposition that would change outdoor living forever.

AN 80-YEAR REPUTATION BUILT ON QUALITY

We've built our long reputation for producing luxurious products that look beautiful and last a lifetime by adhering to three simple principles: innovative design, durable materials, and unrivaled manufacturing prowess. To ensure that every piece endures for generations we use top quality components that are rigorously tested to stand up to both human and climate extremes including hand-forged, lightweight aluminum, yacht-size rope, Flex Sling, Suncloth fabric, Dekton tabletops, and fiber weaves.

At our long-time manufacturing facility in North America, quality is imbued in every chair, stool, table, chaise, sofa, and sectional we make. Here, skilled artisans use the world's most advanced materials and manufacturing techniques, along with an abundance of handcrafted details to create each seamless, flawless piece. And because we own the facility, we can control quality at every turn.

HIGH STYLE, LOW MAINTENANCE, BACKED BY AN UNRIVALED WARRANTY

Our furniture is remarkably easy to maintain. A simple and occasional regimen involving soapy water and a bristle brush will increase the longevity and preserve the beauty of your Brown Jordan furniture for decades to come. We're so confident in the endurance of our beautiful outdoor furniture that we offer best-in-class warranties on frames and cushions.

To view all Brown Jordan fabrics, finishes, and available collections, please visit brownjordan.com

Brown Jordan reserves the right to make minor design changes or modifications and to discontinue furniture items, finish colors, strap, and fiber colors without notice. Printed colors cannot be guaranteed for accuracy. It is the policy of Brown Jordan to apply for trademarks and design and utility patents during product development. These trademarks and patents are rigorously enforced.

Table of Contents

20TWENTY	4
Calcutta	10
Flight	16
Fremont Cushion	22
Fremont Sling	26
Fusion	32
H	38
Kantan Suncloth / Vinyl	44
Moto	50
Oliver	54
Oscar	58
Parkway Cushion / Modular	64
Parkway Sling	70
Pasadena Cushion	76
Pasadena Sling	80
Still	86
Still Sling	90
Stretch	96
Swim	102
Venetian	108
Walter Lamb	114

FABRICS & FINISHES

Finishes	146
Slings	150
Suncloth Fabrics	156
Suncloth Strap & Rope	168
Wood	173

DINING TABLES & ACCESSORIES

Dining Tables	120
Fire Tables	132
Furniture Covers	135
Juno	136
Pillows	140
Umbrellas	142

20TWENTY

Designed by Richard Frinier



Designed with a light, precise hand by visionary Richard Frinier, the 20TWENTY collection transforms traditional woven seating by combining impeccably crafted aluminum, handwoven in colors called Blonde and Blu, and wood with a natural finish.



20TWENTY



5550-6030 ARMLESS LOUNGE CHAIR

1 LOUNGE CHAIR PILLOW INCLUDED
W 29 • D 33 • H 27 • SH 18



5550-6100 OTTOMAN

W 29 • D 28 • H 13 • SH 18



5550-6000 CLUB CHAIR

1 LOUNGE CHAIR PILLOW INCLUDED
W 37 • D 33 • H 27 • SH 18 • AH 27



5550-6260 RIGHT ARM CHAISE

2 RECTANGLE AND 1 SQUARE PILLOWS INCLUDED
W 62 • D 33 • H 27 • SH 18 • AH 27



5550-6270 LEFT ARM CHAISE

2 RECTANGLE AND 1 SQUARE PILLOWS INCLUDED
W 62 • D 33 • H 27 • SH 18 • AH 27



5550-6220 RIGHT ARM LOVESEAT

3 RECTANGLE AND 2 SQUARE PILLOWS INCLUDED
W 62 • D 33 • H 27 • SH 18



5550-6210 LEFT ARM LOVESEAT

3 RECTANGLE AND 2 SQUARE PILLOWS INCLUDED
W 62 • D 33 • H 27 • SH 18



5550-6230 ARMLESS LOVESEAT

2 RECTANGLE AND 2 SQUARE PILLOWS INCLUDED
W 58 • D 33 • H 27 • SH 18

20TWENTY



**5550-6320 RIGHT ARM LOVESEAT
WITH NATURAL END TABLE**
3 RECTANGLE AND 2 SQUARE PILLOWS INCLUDED
W 91 • D 33 • H 27 • SH 18 • AH 27



**5550-6310 LEFT ARM LOVESEAT
WITH NATURAL END TABLE**
3 RECTANGLE AND 2 SQUARE PILLOWS INCLUDED
W 91 • D 33 • H 27 • SH 18 • AH 27



**5550-6232 ARMLESS LOVESEAT
WITH RIGHT NATURAL END TABLE**
2 RECTANGLE AND 2 SQUARE PILLOWS INCLUDED
W 87 • D 33 • H 27 • SH 18



**5550-6231 ARMLESS LOVESEAT
WITH LEFT NATURAL END TABLE**
2 RECTANGLE AND 2 SQUARE PILLOWS INCLUDED
W 87 • D 33 • H 27 • SH 18



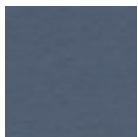
5550-6340 TETE-A-TETE
4 RECTANGLE AND 2 SQUARE PILLOWS INCLUDED
W 95 • D 33 • H 27 • SH 18 • AH 27



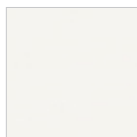
5550-6300 SOFA
5 RECTANGLE AND 3 SQUARE PILLOWS INCLUDED
W 95 • D 33 • H 27 • SH 18 • AH 27

AVAILABLE IN ALL SUNCLOTH FABRIC AND VERSATEX SLING.

FINISHES



SAPPHIRE



SHADE

TEAK

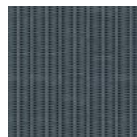


NATURAL

FIBER



BLONDE



BLU

CERAMIC



LUNA



ECLIPSE



20TWENTY Tables



5554-2929 NATURAL END TABLE*
W 29 • D 28 • H 14



5554-3600 36" ROUND BUNCHING TABLE
W 36 • D 36 • H 13

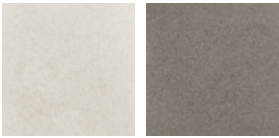


5554-2400 24" ROUND BUNCHING TABLE
W 24 • D 24 • H 15



5554-1600 16" ROUND BUNCHING TABLE
W 16 • D 16 • H 17

CERAMIC



LUNA

ECLIPSE

BUNCHING TABLES AVAILABLE IN ALL FINISHES

*END TABLE IS ONLY AVAILABLE IN NATURAL.
END TABLE ONLY AVAILABLE WITH SAPPHIRE AND SHADE FINISHES.

Calcutta

Designed by John Caldwell



Once an icon, always an icon. Calcutta is the renowned Chinese Chippendale-inspired collection originally designed by Hall Bradley in 1967 and reintroduced on a grander scale by John Caldwell in 2007.





Calcutta



3510-2000 ARM CHAIR
W 24.25 • D 25.75 • H 35.75 • SH 20 • AH 25.5



3510-1000 SIDE CHAIR
W 19.25 • D 25.75 • H 35.75 • SH 20



3510-6000 LOUNGE CHAIR
W 29 • D 33.5 • H 35.75 • SH 19 • AH 24.75



3510-6100 OTTOMAN
W 24.75 • D 25.5 • H 18.75 • SH 18.75



3510-7000 ADJUSTABLE CHAISE WITH WHEELS
W 29.25 • D 82.5 • H 42 • SH 19 • AH 22.75



3510-6200 LOVESEAT
W 52.75 • D 33.5 • D 35.75 • SH 19 • AH 24.75



3510-6300 SOFA
W 76.5 • D 33.5 • H 35.75 • SH 19 • AH 24.75

AVAILABLE IN ALL FINISHES.
CUSHIONS AVAILABLE IN ALL SUNCLOTH FABRIC AND
VERSATEX SLING. CONTRASTING WELT AVAILABLE.



Calcutta Tables



26" SQUARE CORNER TABLE
3513-2626 CAST ALUMINUM TOP
W 26 • D 26 • H 20



20" ROUND OCCASIONAL TABLE
3513-2000 CAST ALUMINUM TOP
W 20.75 • D 20.75 • H 20



24" X 42" COFFEE TABLE
3513-2442 CAST ALUMINUM TOP
W 24 • D 42 • H 20



36" ROUND CHAT TABLE
3513-3600 CAST ALUMINUM TOP
W 36 • D 36 • H 20



54" ROUND DINING UMBRELLA TABLE
3512-5400 CAST ALUMINUM TOP
W 54 • D 54 • H 29



44" X 86" DINING UMBRELLA TABLE
3512-4486 CAST ALUMINUM TOP
W 44 • D 86 • H 29



36" ROUND BISTRO UMBRELLA TABLE
3512-3600 CAST ALUMINUM TOP
W 36 • D 36 • H 29

CAST ALUMINUM TOP




AVAILABLE IN ALL FINISHES. AVAILABLE WITH A CAST ALUMINUM TOP.

Flight

Designed by John Caldwell



A black metal outdoor dining set, including a table and chairs, is positioned on a concrete patio. The table has a perforated top. The chairs have a mesh backrest. The patio is adjacent to a swimming pool with a light blue interior. The scene is illuminated by bright sunlight, casting shadows on the concrete. In the background, there are tall, dry grasses and a wooden deck area.

Inspired by the aerodynamic lines of a jet, designer John Caldwell's Flight Sling collection represents a fresh, contemporary take on modernism that's as relevant now as when it launched in 2011.



Flight Sling



3940-2000 STACKING ARM CHAIR
W 27.5 • D 29 • H 33.5 • SH 17 • AH 25



3940-1000 STACKING SIDE CHAIR
W 21.5 • D 29 • H 33.75 • SH 17.5



3940-4600 SWIVEL ROCKER*
W 27.5 • D 29 • H 33.5 • SH 17 • AH 25
*NOT SUITABLE FOR CONTRACT USE.



3940-3500 BAR STOOL WITH ARMS
W 27.5 • D 28 • H 46 • SH 28 • AH 36



3940-5000 STACKING LOUNGE CHAIR
W 34 • D 32.25 • H 34.5 • SH 16.25 • AH 24.75



3940-5100 OTTOMAN
W 31 • D 23.5 • H 15.75 • SH 15.25



3940-7200 STACKING ADJUSTABLE CHAISE
W 33 • D 82 • H 45 • SH 15.75 • AH 21.25



3940-6200 LOVESEAT
W 58.75 • D 32.75 • H 34.5 • SH 16.25 • AH 24.75

3940-7000 STACKING ADJUSTABLE ARMLESS CHAISE
W 28 • D 82 • H 45 • SH 15.75

AVAILABLE IN ALL FINISHES.
AVAILABLE IN VERSATEX SLING.



Flight Tables



21" ROUND STACKING OCCASIONAL TABLE
3943-2300 GLASS TOP
3943-2300-SO SOLID ALUMINUM TOP
3943-2300-PY PYLON ALUMINUM TOP
3943-2300-NO NOVA ALUMINUM TOP
 W 22.25 • D 22.25 • H 17.75



28" X 45" COFFEE TABLE
3943-2845 GLASS TOP
3943-2845-SO SOLID ALUMINUM TOP
3943-2845-NO NOVA ALUMINUM TOP
 W 44.5 • D 27.5 • H 18



36" SQUARE DINING TABLE
3941-3636 GLASS TOP
3942-3636 GLASS UMBRELLA TOP
3941-3636-SO SOLID ALUMINUM TOP
3942-3636-SO SOLID ALUMINUM
3941-3636-PY PYLON ALUMINUM TOP
3942-3636-PY PYLON ALUMINUM UMBRELLA TOP
3941-3636-NO NOVA ALUMINUM TOP
3942-3636-NO NOVA ALUMINUM UMBRELLA TOP
 W 39.5 • D 39.25 • H 29



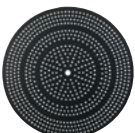
54" ROUND DINING TABLE
3941-5400 GLASS TOP
3942-5400 GLASS UMBRELLA TOP
3941-5400-SO SOLID ALUMINUM TOP
3942-5400-SO SOLID ALUMINUM UMBRELLA TOP
3941-5400-PY PYLON ALUMINUM TOP
3942-5400-PY PYLON ALUMINUM UMBRELLA TOP
3941-5400-NO NOVA ALUMINUM TOP
3942-5400-NO NOVA ALUMINUM UMBRELLA TOP
 W 57 • D 57 • H 29



45" X 79" DINING TABLE
3941-4579 GLASS TOP
3942-4579 GLASS UMBRELLA TOP
3941-4579-SO SOLID ALUMINUM TOP
3942-4579-SO SOLID ALUMINUM UMBRELLA TOP
3941-4579-PY PYLON ALUMINUM TOP
3942-4579-PY PYLON ALUMINUM UMBRELLA TOP
3941-4579-NO NOVA ALUMINUM TOP
3942-4579-NO NOVA ALUMINUM UMBRELLA TOP
 W 79.5 • D 45 • H 29

45" X 99" DINING TABLE
3941-4599 GLASS TOP
3942-4599 GLASS UMBRELLA TOP
3941-4599-SO SOLID ALUMINUM TOP
3942-4599-SO SOLID ALUMINUM UMBRELLA TOP
3941-4599-PY PYLON ALUMINUM TOP
3942-4599-PY PYLON ALUMINUM UMBRELLA TOP
3941-4599-NO NOVA ALUMINUM TOP
3942-4599-NO NOVA ALUMINUM UMBRELLA TOP
 W 99.5 • D 45.5 • H 29

ALUMINUM TOP



NOVA (NO)



PYLON (PY)



SOLID (SO)

GLASS TOPS



CLEAR (C)

AVAILABLE IN ALL FINISHES.
 AVAILABLE WITH ALUMINUM OR CLEAR GLASS TOPS.

Fremont Cushion

Designed by John Caldwell



John Caldwell's sophisticated Fremont Cushion collection demonstrates the designer's boundless modernist vocabulary and showcases Brown Jordan's unrivaled 80-year expertise with cast-aluminum.





Fremont Cushion



4340-6000 LOUNGE CHAIR
W 34 • D 35.25 • H 32 • SH 19 • AH 24



4340-5200 SWIVEL MOTION LOUNGE CHAIR
W 31.25 • D 36.5 • H 43 • SH 19 • AH 24



4340-6100 OTTOMAN
W 33.75 • D 20.75 • H 19 • SH 19



4340-7000 ADJUSTABLE CHAISE
W 31.25 • D 79.75 • H 34 • SH 18 • AH 22.25



4340-6200 LOVESEAT
W 60 • D 35.25 • H 32 • SH 19 • AH 24



4340-6300 SOFA
W 86 • D 35.25 • H 35.25 • SH 19 • AH 24



4340-6460 CURVED SOFA
W 112.5 • D 48.5 • H 48.5 • SH 19 • AH 24

AVAILABLE IN ALL FINISHES.
CUSHIONS AVAILABLE IN ALL SUNCLOTH FABRIC AND VERSATEX SLING.
COORDINATES WITH FREMONT SLING ON PG. 26

Fremont Sling

Designed by John Caldwell



Fremont Sling is an elegant, traditional collection that demonstrates iconic designer John Caldwell's boundless modern vocabulary and showcases Brown Jordan's innovation and expertise with aluminum and Versatex Sling.





Fremont Sling



4320-2000 ARM CHAIR
W 26.5 • D 29.75 • H 35 • SH 17 • AH 24.75



4320-1000 SIDE CHAIR
W 23.25 • D 27.75 • H 35 • SH 17



4320-4600 SWIVEL ROCKER
W 26 • D 28.75 • H 35 • SH 17 • AH 24.75



4320-3600 SWIVEL BARSTOOL WITH ARMS
W 26.5 • D 28.75 • H 46 • SH 28 • AH 35.75



4320-360B SWIVEL COUNTER HEIGHT STOOL WITH ARMS
W 26.5 • D 28.75 • H 43 • SH 25 • AH 32.75



4320-5000 LOUNGE CHAIR
W 30 • D 30.75 • H 32.25 • SH 16 • AH 23



4320-5100 OTTOMAN
W 29 • D 22.25 • H 15 • SH 15



4320-7000 ADJUSTABLE CHAISE
W 31.5 • D 82 • H 44 • SH 15.5 • AH 21.25

AVAILABLE IN ALL FINISHES.
AVAILABLE IN VERSATEX SLING.



Fremont Tables



26" SQ OCCASIONAL TABLE
 4323-2626 GLASS TOP
 4323-2626-NO NOVA ALUMINUM TOP
 4323-2626-PY PYLON ALUMINUM TOP
 4323-2626-SO SOLID ALUMINUM TOP
 W 25.75 • D 25.75 • H 18



26" X 43" COFFEE TABLE
 4323-2643 GLASS TOP
 4323-2643-NO NOVA ALUMINUM TOP
 4323-2643-PY PYLON ALUMINUM TOP
 4323-2643-SO SOLID ALUMINUM TOP
 W 43 • D 25.75 • H 18



44" SQ CHAT TABLE
 4323-4444 GLASS TOP
 4323-4444-NO NOVA ALUMINUM TOP
 4323-4444-PY PYLON ALUMINUM TOP
 4323-4444-SO SOLID ALUMINUM TOP
 W 43.75 • D 43.75 • H 20



54" RD DINING TABLE
 4325-5400 GLASS TOP
 4325-5400-NO NOVA ALUMINUM TOP
 4326-5400-NO NOVA ALUMINUM UMBRELLA TOP
 4325-5400-PY PYLON ALUMINUM TOP
 4326-5400-PY PYLON ALUMINUM UMBRELLA TOP
 4325-5400-SO SOLID ALUMINUM TOP
 4326-5400-SO SOLID ALUMINUM UMBRELLA TOP
 W 55.5 • D 55.5 • H 29



44" X 78" RECT DINING TABLE
 4321-4478 GLASS TOP
 4321-4478-NO NOVA ALUMINUM TOP
 4322-4478-NO NOVA ALUMINUM UMBRELLA TOP
 4321-4478-PY PYLON ALUMINUM TOP
 4322-4478-PY PYLON ALUMINUM UMBRELLA TOP
 4321-4478-SO SOLID ALUMINUM TOP
 4322-4478-SO SOLID ALUMINUM UMBRELLA TOP
 W 78 • D 44 • H 29



44" X 98" RECT DINING TABLE
 4321-4498 GLASS TOP
 4321-4498-NO NOVA ALUMINUM TOP
 4322-4498-NO NOVA ALUMINUM UMBRELLA TOP
 4321-4498-PY PYLON ALUMINUM TOP
 4322-4498-PY PYLON ALUMINUM UMBRELLA TOP
 4321-4498-SO SOLID ALUMINUM TOP
 4322-4498-SO SOLID ALUMINUM UMBRELLA TOP
 W 98 • D 44 • H 29



42" RD BAR TABLE
 4327-4200 GLASS TOP
 4327-4200-NO NOVA ALUMINUM TOP
 4328-4200-NO NOVA ALUMINUM UMBRELLA TOP
 4327-4200-PY PYLON ALUMINUM TOP
 4328-4200-PY PYLON ALUMINUM UMBRELLA TOP
 4327-4200-SO SOLID ALUMINUM TOP
 4328-4200-SO SOLID ALUMINUM UMBRELLA TOP
 W 43 • D 43 • H 40

ALUMINUM TOP



NOVA (NO)



PYLON (PY)

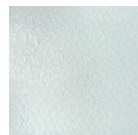


SOLID (SO)

GLASS TOPS



CLEAR (C)



SMOOTH
ROUGH (SR)

AVAILABLE IN ALL FINISHES.

AVAILABLE WITH ALUMINUM OR GLASS TOPS.

Fusion

Designed by Richard Frinier



Richard Frinier's forward-thinking Fusion designs marry bold angles reminiscent of a ship's prow with a weather-resistant resin cord material to create a contemporary collection that continues to be a bestseller.



Fusion



2860-2200 STACKING ARM CHAIR

W 24 • D 25 • H 33.75 • SH 17 • AH 25.75

2860-2201 STACKING ARM CHAIR SEAT PAD

2860-2000 ARM CHAIR

W 27 • D 28 • H 34 • SH 18 • AH 26



2860-3500 BARSTOOL WITH ARMS

W 23 • D 24.5 • H 44 • SH 27.5 • AH 35.75

2860-3501 BARSTOOL SEAT PAD



2860-6000 LOUNGE CHAIR SLIM BACK

W 33 • D 30.75 • H 32.5 • SH 22 • AH 26



2860-6010 LOUNGE CHAIR PILLOW BACK

W 33 • D 31.25 • H 36 • SH 22 • AH 26



2860-6460 CLUB CHAIR

W 34 • D 35.25 • H 36 • SH 17 • AH 26



2860-6100 OTTOMAN

W 23.5 • D 23.5 • H 17.25 • SH 17.5



2860-7200 STACKING FLAT ADJUSTABLE CHAISE

W 33.5 • D 83.5 • H 43 • SH 14.25 • AH 21.25

2860-7201 CHAISE SEAT PAD



2860-6200 LOVESEAT SLIM BACK

W 65.5 • D 30.75 • H 32.5 • SH 22 • AH 26



2860-6210 LOVESEAT PILLOW BACK

W 65.5 • D 31.25 • H 36 • SH 22 • AH 26



2860-6300 SOFA SLIM BACK

W 83.5 • D 31.25 • H 32.5 • SH 22 • AH 26



2860-6310 SOFA PILLOW BACK

W 83.5 • D 31.25 • H 36 • SH 22 • AH 26



2860-6360 CURVED SOFA SLIM BACK

W 98.25 • D 40 • H 43 • SH 14.25 • AH 21.25

Fusion Sectional



2860-6420 RIGHT ARM LOVESEAT
W 56 • D 35 • H 32.5 • SH 17 • AH 26



2860-6410 LEFT ARM LOVESEAT
W 56 • D 35 • H 32.5 • SH 17 • AH 26

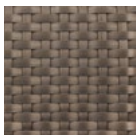


2860-6430 CENTER ARMLESS CHAIR
W 26 • D 35 • H 32.5 • SH 17



2860-6440 CORNER CHAIR
W 34 • D 34 • H 32.5 • SH 17 • AH 26

FIBER



BRONZE

CUSHIONS AVAILABLE IN ALL SUNCLOTH FABRIC AND VERSATEX SLING.



Fusion Tables



2863-1919 19" SQ WOVEN OCCASIONAL TABLE
W 18 • D 18 • H 20.5



2863-2828 28" SQ WOVEN COFFEE TABLE
W 27.5 • D 27.5 • H 18.75



2862-4800 48" SQ/RD WOVEN DINING UMBRELLA TABLE
W 48.5 • D 48.5 • H 28.5

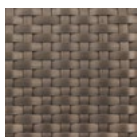


2862-4478 44" X 78" RECT WOVEN DINING UMBRELLA TABLE
W 43.25 • D 77.25 • H 28.5



2868-3636 36" SQ WOVEN BAR UMBRELLA TABLE
W 36 • D 36 • H 39

FIBER



BRONZE

H

Designed by Toan Nguyen



Using specially developed 1-inch yacht-size rope as a key design element, Milan-based designer Toan Nguyen created a stunning collection inspired by the lines and angles of the letter “H”.





H



5570-2000 ARM CHAIR
W 26.5 • D 24.75 • H 32.25 • SH 20 • AH 25



5570-6000 LOUNGE CHAIR
W 36.5 • D 33 • H 32 • SH 17 • AH 22.75



5570-6260 RIGHT ARM CHAISE SECTIONAL
W 63.5 • D 33.75 • H 32 • SH 17 • AH 25.25



5570-6270 LEFT ARM CHAISE SECTIONAL
W 63.5 • D 33.75 • H 32 • SH 17 • AH 25.25



5570-6200 LOVESEAT
W 66.5 • D 33.75 • H 32 • SH 17 • AH 25.25



5570-6220 RIGHT ARM LOVESEAT
W 63.5 • D 33.75 • H 32 • SH 17 • AH 25.25



5570-6210 LEFT ARM LOVESEAT
W 63.5 • D 33.75 • H 32 • SH 17 • AH 25.25



5570-6230 ARMLESS LOVESEAT
W 60.5 • D 33.75 • H 32 • SH 17



5570-6300 SOFA
W 96.25 • D 33.75 • H 32 • SH 17 • AH 25.25



5570-6320 RIGHT ARM SOFA
W 93.25 • D 33.75 • H 32 • SH 17 • AH 25.25



5570-6310 LEFT ARM SOFA
W 93.25 • D 33.75 • H 32 • SH 17 • AH 25.25



5570-6330 ARMLESS SOFA
W 90.25 • D 33.75 • H 32 • SH 17

ROPE



ABALONE



LICHEN

AVAILABLE IN ALL FINISHES. CUSHIONS AVAILABLE IN ALL SUNCLOTH FABRICS. ROPE AVAILABLE IN ABALONE OR LICHEN.



H Tables



5573-2000 20" ROUND SIDE TABLE
W 20 • D 20 • H 20



5573-2600 26" ROUND END TABLE
W 26 • D 26 • H 17



5574-2842 28" X 42" LARGE COFFEE TABLE
W 28 • D 42 • H 12.5



5574-4500 45" ROUND COFFEE TABLE
W 45 • D 45 • H 12.5

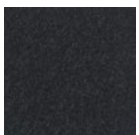


5574-3636 36" X 36" SQUARE COFFEE TABLE
W 36 • D 36 • H 12.5

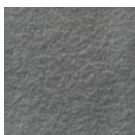


5574-2142 21" X 42" SMALL COFFEE TABLE
W 21 • D 42 • H 12.5

CERAMIC



ONIX



SLATE

AVAILABLE IN ALL FINISHES.

Kantan

Designed by Tadao Inouye



Japanese designer Tadao Inouye created this pivotal mid-century modern collection for Brown Jordan in 1956 using the latest lightweight extruded aluminum and sun-and-weather-resistant vinyl straps.



Kantan Suncloth



5120-2000-SC ARM CHAIR
W 23 • D 27 • H 32.75 • SH 17.75 • AH 19.75



5120-5000-SC LOUNGE CHAIR
W 25.75 • D 29.25 • H 27 • SH 15.25 • AH 17



5120-5500-SC MOTION LOUNGE CHAIR
W 25.75 • D 33 • H 27 • SH 15.25 • AH 17



5120-5100-SC OTTOMAN
W 25.75 • D 25.75 • H 15.75 • SH 15.75



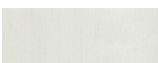
5120-7000-SC FLAT ADJUSTABLE CHAISE
W 28.75 • D 79 • H 37.5 • SH 15 • AH 19



5123-1818-SC STACKING STOOL/OCCASIONAL TABLE
W 17.75 • D 17.75 • H 15.25 • SH 15.25

AVAILABLE IN ALL FINISHES.
SPECIFY 1" SUNCLOTH STRAP, KNOT WEAVE STRAP PATTERN.

1" SUNCLOTH STRAP COLORS



WHITE



SPA



MICA



COAL



MARINE

Kantan Vinyl



5120-2000-VL ARM CHAIR
W 23 • D 27 • H 32.75 • SH 17.75 • AH 19.75



5120-5000-VL LOUNGE CHAIR
W 25.75 • D 29.25 • H 27 • SH 15.25 • AH 17



5120-5500-VL MOTION LOUNGE CHAIR
W 25.75 • D 33 • H 27 • SH 15.25 • AH 17



5120-5100-VL OTTOMAN
W 25.75 • D 25.75 • H 15.75 • SH 15.75



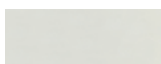
5120-7000-VL FLAT ADJUSTABLE CHAISE
W 28.75 • D 79 • H 37.5 • SH 15 • AH 19



5123-1818-VL STACKING STOOL/OCCASIONAL TABLE
W 17.75 • D 17.75 • H 15.25 • SH 15.25

AVAILABLE IN ALL FINISHES.
SPECIFY 1" VINYL STRAP, KNOT WEAVE STRAP PATTERN.

1" VINYL STRAP COLORS



WHITE LIGHT



YELLOW



ORANGE



HOT PINK



RED



BRIGHT GREEN



BRIGHT BLUE



MARINE



DARK GREEN



SEA GLASS



MICA



COFFEE



NIGHT



Kantan Tables



20" RD OCCASIONAL TABLE
3393-2000 GLASS TOP
3393-2000-RT ROUGH TEX ACRYLIC TOP
3393-2000-SO SOLID ALUMINUM TOP
 W 19.5 • D 19.5 • H 18



42" RD CHAT TABLE
5103-4200 GLASS TOP
 W 42 • D 42 • H 22



42" RD DINING TABLE
5105-4200 GLASS TOP
 W 42.25 • D 42.25 • H 28.5



36" RD TABLE
3395-3600 GLASS TOP
3396-3600 GLASS UMBRELLA TOP
3395-3600-RT ROUGH TEX ACRYLIC TOP
3396-3600-RT ROUGH TEX ACRYLIC UMBRELLA TOP
3395-3600-SO SOLID ALUMINUM TOP
3396-3600-SO SOLID ALUMINUM UMBRELLA TOP
 W 37.25 • D 37.25 • H 29.25



48" RD DINING TABLE
3391-4800 GLASS TOP
3392-4800 GLASS UMBRELLA TOP
3391-4800-RT ROUGH TEX ACRYLIC TOP
3392-4800-RT ROUGH TEX ACRYLIC UMBRELLA TOP
3391-4800-SO SOLID ALUMINUM TOP
3392-4800-SO SOLID ALUMINUM UMBRELLA TOP
 W 49.75 • D 49.75 • H 29.25



43" X 77" RECT DINING TABLE
3391-4377 GLASS TOP
3392-4377 GLASS UMBRELLA TOP
3391-4377-RT ROUGH TEX ACRYLIC TOP
3392-4377-RT ROUGH TEX ACRYLIC UMBRELLA TOP
3391-4377-SO SOLID ALUMINUM TOP
3392-4377-SO SOLID ALUMINUM UMBRELLA TOP
 W 43 • D 77 • H 29.25



5109-1919 TRAY/OCCASIONAL TABLE TOP
 W 18.5 • D 18.5 • H 2

ALUMINUM TOP



SOLID (SO)

GLASS TOPS



CLEAR (C)



SMOOTH
ROUGH (SR)

ACRYLIC TOPS



ROUGH
TEXTURE (RT)

AVAILABLE WITH A SOLID ALUMINUM TOP.
 AVAILABLE WITH ACRYLIC AND GLASS TOPS.
 POWDERCOAT FINISHES - ALL AVAILABLE.

Moto

Designed by Ann Marie Vering



Moto is the Italian word for movement and motion, traits that aptly describe Ann Marie Vering's precisely designed, endlessly configurable sectional seating system, a low-profile design featuring tailored upholstered panels.





Moto



5600-6000 LOUNGE CHAIR
W 41.75 • D 38.5 • H 28.75 • SH 17.25 • AH 23



5600-6260 RIGHT ARM CHAISE SECTIONAL
W 83 • D 38.5 • H 28.75 • SH 17.25 • AH 23



5600-6270 LEFT ARM CHAISE SECTIONAL
W 83 • D 38.5 • H 28.75 • SH 17.25 • AH 23



5600-7920 RIGHT ARM DAYBED SECTIONAL
W 46 • D 62 • H 28.75 • SH 17.25 • AH 23



5600-7910 LEFT ARM DAYBED SECTIONAL
W 46 • D 62 • H 28.75 • SH 17.25 • AH 23



5600-6220 RIGHT ARM LOVESEAT SECTIONAL
W 83 • D 38.5 • H 28.75 • SH 17.25 • AH 23



5600-6210 LEFT ARM LOVESEAT SECTIONAL
W 83 • D 38.5 • H 28.75 • SH 17.25 • AH 23



5600-6221 RIGHT ARM LOVESEAT SECTIONAL WITH TABLE
W 93 • D 38.5 • H 28.75 • SH 17.25 • AH 23



5600-6212 LEFT ARM LOVESEAT SECTIONAL WITH TABLE
W 93 • D 38.5 • H 28.75 • SH 17.25 • AH 23



5600-6232 ARMLESS SECTIONAL WITH RIGHT TABLE
W 84 • D 38.5 • H 28.75 • SH 17.25



5600-6231 ARMLESS SECTIONAL WITH LEFT TABLE
W 84 • D 38.5 • H 28.75 • SH 17.25

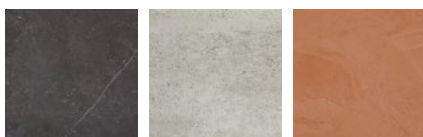


5600-6300 SOFA
W 109 • D 38.5 • H 28.75 • SH 17.25 • AH 21



5600-6440 CORNER SECTIONAL
W 38.5 • D 38.5 • H 28.75 • SH 17.25 • AH 23

TABLETOP



FOSSIL

KEON

UMBER

AVAILABLE IN ALL FINISHES. CUSHIONS AVAILABLE IN ALL SUNCLOTH FABRICS. CONNECTING TABLETOPS ARE AVAILABLE IN FOSSIL, KEON, AND UMBER.

Oliver

Designed by Ann Marie Vering



Designer Ann Marie Vering's third collection for Brown Jordan is inspired by the sculptural, curving wicker bucket seats of a 1964 Fiat Jolly, and by the glamorous, carefree Mediterranean lifestyle this open air, fringe-top car evokes.





Oliver



5640-2000 ARM CHAIR
W 25 • D 28 • H 34 • SH 20.5 • AH 25



5640-1000 SIDE CHAIR
W 23 • D 28 • H 34 • SH 20.5



5640-3600 BAR STOOL
W 24 • D 26.25 • H 43.5 • SH 30.5 • AH 35



5640-360B COUNTER HEIGHT STOOL
W 24 • D 25.75 • H 39.5 • SH 26.5 • AH 31



5640-6000 LOUNGE CHAIR
W 34 • D 36.75 • H 33.5 • SH 17.5 • AH 21.75



5640-6010 HIGH BACK LOUNGE CHAIR
W 34 • D 36.75 • H 38 • SH 17.5 • AH 21.75



5640-6100 OTTOMAN
W 27.25 • D 20 • H 15.5 • SH 15.5



5640-7200 ADJUSTABLE CHAISE
W 35 • D 80 • H 37.5 • SH 14.5



5640-6200 LOVESEAT
W 64 • D 36.75 • H 33.5 • SH 17.5 • AH 21.75
TOSS PILLOWS NOT INCLUDED



5640-6300 SOFA
W 84 • D 36.75 • H 33.5 • SH 17.5 • AH 21.75
TOSS PILLOWS NOT INCLUDED

BASKETWEAVE ROPE



BLUFF



PEPPERCORN

AVAILABLE IN ALL FINISHES. CUSHIONS AVAILABLE IN ALL SUNCLOTH FABRIC OR VERSATEX SLING. BASKETWEAVE AVAILABLE IN BLUFF OR PEPPERCORN.

Oscar

Designed by Ann Marie Vering



Designed by Ann Marie Vering in 2019, Oscar is a highly successful, cutting-edge collection that pays homage to the early rope designs of iconic Brown Jordan designer Walter Lamb.





Oscar



5490-2200 ARM CHAIR
W 23.5 • D 26.5 • H 33 • SH 19 • AH 24.75



5490-3600 BAR STOOL WITH ARMS
W 22.5 • D 24.5 • H 43.5 • SH 30.5 • AH 36.25



5490-6000 LOUNGE CHAIR
W 31.5 • D 32.25 • H 32 • SH 16.5 • AH 25.75



5490-6100 OTTOMAN
W 31.5 • D 24.75 • H 14 • SH 14



5490-7000 CHAISE
W 27 • D 84.25 • H 35 • SH 14.5



5490-7900 DAY BED
(2) 20" AND (3) 16" PILLOWS INCLUDED
W 67 • D 68 • H 32 • SH 16.25 • AH 25.5



5490-6200 LOVESEAT
(2) 16" PILLOWS INCLUDED
W 60 • D 32.25 • H 32 • SH 16.5 • AH 25.75



5490-6300 SOFA
(2) 16" PILLOWS INCLUDED
W 82 • D 32.25 • H 32 • SH 16.5 • AH 25.75



5490-1851 BENCH 18" X 51"
W 18 • D 51 • H 20 • SH 20

5490-1875 BENCH 18" X 75"
W 18 • D 75 • H 20 • SH 20

AVAILABLE IN ALL FINISHES. CUSHIONS AVAILABLE IN ALL SUNCLOTH FABRIC. ROPES AVAILABLE IN COAL OR PEBBLE.

ROPES



PEBBLE



COAL

ALSO AVAILABLE

PILLOWS

5490-1616-C99 16" PILLOWS

5490-2020-C99 20" PILLOWS



Oscar Tables



17" ROUND OCCASIONAL TABLE

5493-1700-FS FOSSIL TOP

5493-1700-KN KEON TOP

W 17 • D 17 • H 19

23" ROUND OCCASIONAL TABLE

5493-2300-FS FOSSIL TOP

5493-2300-KN KEON TOP

W 23 • D 23 • H 22

28" ROUND OCCASIONAL TABLE

5494-2800-FS FOSSIL TOP

5494-2800-KN KEON TOP

W 28 • D 28 • H 16



30" X 40" COFFEE TABLE

3494-3040-FS FOSSIL TOP

3494-3040-KN KEON TOP

W 30 • D 40 • H 13.25

30" X 60" COFFEE TABLE

3494-3060-FS FOSSIL TOP

3494-3060-KN KEON TOP

W 30 • D 60 • H 13.25



36" X 72" RECTANGLE DINING TABLE

5491-3672-FS FOSSIL TOP

5491-3672-KN KEON TOP

W 36 • D 72 • H 29

36" X 96" RECTANGLE DINING TABLE

5491-3696-FS FOSSIL TOP

5491-3696-KN KEON TOP

W 36 • D 96 • H 29

36" X 120" RECTANGLE DINING TABLE

5491-3612-FS FOSSIL TOP

5491-3612-KN KEON TOP

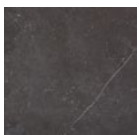
W 36 • D 120 • H 29



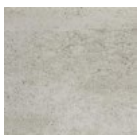
5499-1100 HANGING BASKET

W 11 • D 11 • H 12

TABLETOP



FOSSIL



KEON



UMBER

AVAILABLE IN ALL FINISHES.

Parkway Cushion

Designed by John Caldwell



Inspired by the golden era of Modernism, Parkway conjures images of a stately past. A broad, flat extrusion creates a smooth, pleasing touch and complements the frame's lengthy, slender profile. The arms are crisply bent into a rectilinear profile reminiscent of the geometry prominent during the heyday of modern design.





Parkway Cushion



3470-2000 ARM CHAIR
W 28.5 • D 30.5 • H 33 • SH 20 • AH 24.25



3470-4600 SWIVEL ROCKER*
W 28.5 • D 30.5 • H 33 • SH 20 • AH 24.25
*NOT SUITABLE FOR CONTRACT USE.



3470-6000 LOUNGE CHAIR
W 33.25 • D 34.5 • H 33 • SH 19.5 • AH 24.25



3470-5200 MOTION LOUNGE CHAIR*
W 34.75 • D 34.5 • H 33 • SH 19.5 • AH 24.25
*NOT SUITABLE FOR CONTRACT USE.



3470-6100 OTTOMAN
W 33.25 • D 26 • H 19 • SH 19



3470-6200 LOVESEAT
W 59.25 • D 34.5 • H 33 • SH • 19.5 • AH 24.25



3470-6300 SOFA
W 85.25 • D 34.5 • H 33 • SH 19.5 • AH 24.25

AVAILABLE IN ALL FINISHES.
AVAILABLE IN ALL SUNCLOTH FABRIC AND VERSATEX SLING
COORDINATES WITH PARKWAY SLING ON PG. 70



Parkway Modular



4560-6450 SECTIONAL OTTOMAN
W 35 • D 35 • H 17.5 • SH 17.5



4560-6470 QUARTER ROUND OTTOMAN
W 35 • D 35 • H 17.5



4560-6420 RIGHT ARM LOVESEAT
W 70 • D 35 • H 31 • SH 17.5 • AH 28.5



4560-6410 LEFT ARM LOVESEAT
W 70 • D 35 • H 31 • SH 17.5 • AH 28.5



4560-6431 ARMLESS LOVESEAT
W 70 • D 35 • H 31 • SH 17.5



4560-6300 MODULAR SOFA
W 105 • D 35 • H 31 • SH 17.5 • AH 28.5



4560-6480 RIGHT ARM SOFA
W 105 • D 35 • H 31 • SH 17.5 • AH 28.5



4560-6490 LEFT ARM SOFA
W 105 • D 35 • H 31 • SH 17.5 • AH 28.5



4560-6440 CORNER SECTIONAL
W 35 • D 35 • H 31 • SH 17.5



4560-6460 QUARTER ROUND SECTIONAL
W 35 • D 35 • H 31 • SH 17.5



4560-6430 CENTER SECTIONAL
W 35 • D 35 • H 31 • SH 17.5



35" SQUARE OCCASIONAL TABLE
4563-3535 TEXTURED ALUMINUM TOP
4563-3535-SO SOLID ALUMINUM TOP
W 35 • D 35 • H 17



QUARTER ROUND OCCASIONAL TABLE
4564-3535 TEXTURED ALUMINUM TOP
4564-3535-SO SOLID ALUMINUM TOP
W 35 • D 35 • H 17

ALUMINUM TOP



NOVA (NO)



PYLON (PY)



SOLID (SO)

AVAILABLE IN ALL FINISHES. AVAILABLE IN ALL SUNCLOTH FABRIC AND VERSATEX SLING. PARKWAY MODULAR TABLES ARE AVAILABLE WITH A PERFORATED OR SOLID ALUMINUM TOP.

Parkway Sling

Designed by John Caldwell



Legendary designer John Caldwell created the award-winning Parkway collection for Brown Jordan in 2006 and interpreted the design in Parkway Flex, Parkway Sling, Parkway Cushion, and Parkway Modular.



Parkway Flex Sling



3470-2200 ARM CHAIR
W 28.5 • D 27.25 • H 35.25 • SH 17.75 • AH 24.25



3470-4700 SWIVEL ROCKER
W 28.5 • D 27 • H 35 • SH 17.5 • AH 24



3470-3500 BARSTOOL
W 23 • D 26.5 • H 47 • SH 28.5



3470-5300 MOTION LOUNGE CHAIR
W 33.25 • D 30 • H 34.5 • SH 16.25 • AH 24.25



3470-5100 OTTOMAN
W 31.5 • D 23 • H 17.25 • SH 15.25



3470-7000 ADJUSTABLE CHAISE WITH WHEELS
W 30.25 • D 82 • H 44 • SH 15

3470-7001 CHAISE PAD*

*SUNCLOTH FABRICS ARE AVAILABLE TO ORDER ON THE CHAISE PAD.



3470-7200 STACKING CHAISE
W 28.25 • D 80.25 • H 40 • SH 15

AVAILABLE IN ALL FINISHES.
AVAILABLE IN FLEX SLING.

Parkway Sling



5330-2000 STACKING ARM CHAIR
W 26 • D 25.5 • H 34 • SH 17.5 • AH 25.75



5330-1000 SIDE CHAIR
W 21.75 • D 25.5 • H 34 • SH 17.5



5330-3500 BARSTOOL WITH ARMS
W 26 • D 25.5 • H 44.75 • SH 28 • AH 33



5330-5000 LOUNGE CHAIR
W 29.75 • D 29.5 • H 32 • SH 16 • AH 24



5330-5200 MOTION LOUNGE CHAIR
W 31.75 • D 29.75 • H 32 • SH 16 • AH 24



5330-1200 SAND CHAIR
W 26 • D 25.5 • H 27.25 • SH 10.5 • AH 18.75



5330-5100 OTTOMAN
W 27.5 • D 23.5 • H 17 • SH 15 • AH 24



**5330-7800 STACKING ADJUSTABLE CHAISE
WITH WHEELS**
W 31.25 • D 82 • H 43.5 • SH 14.75



5330-7000 STACKING ADJUSTABLE CHAISE
W 28.5 • D 82 • H 43.5 • SH 14.75

AVAILABLE IN ALL FINISHES.
AVAILABLE IN VERSATEX SLING.

Parkway Tables



21" SQUARE OCCASIONAL TABLE
3473-2121 GLASS TOP
3473-2121-RT ROUGH TEX ACRYLIC TOP
 W 20.5 • D 20.5 • H 20



29" SQUARE CORNER TABLE
3473-2929 GLASS TOP
3473-2929-RT ROUGH TEX ACRYLIC TOP
 W 28.5 • D 28.5 • H 20



45" ROUND CHAT TABLE
3473-4500 GLASS TOP
3473-4500-RT ROUGH TEX ACRYLIC TOP
 W 44.5 • D 44.5 • H 20



54" ROUND DINING TABLE
3475-5400 GLASS TOP
3476-5400 GLASS UMBRELLA TOP
3475-5400-RT ROUGH TEX ACRYLIC TOP
3476-5400-RT ROUGH TEX ACRYLIC UMBRELLA TOP
 W 58 • D 58 • H 28.5



47" X 81" DINING TABLE
3475-4781 GLASS TOP
3476-4781 GLASS UMBRELLA TOP
3475-4781-RT ROUGH TEX ACRYLIC TOP
3476-4781-RT ROUGH TEX ACRYLIC UMBRELLA TOP
 W 46.5 • L 80.5 • H 28.75



SERVING CART*
3479-2344 GLASS TOP
 W 27.25 • D 44 • H 37.25
 *NOT SUITABLE FOR CONTRACT USE.

GLASS TOPS



CLEAR (C)



SMOOTH
ROUGH (SR)



SOLAR GRAY
GLASS (SG)

ACRYLIC TOPS



ROUGH
TEXTURE (RT)

AVAILABLE IN ALL FINISHES.
 AVAILABLE WITH ACRYLIC AND GLASS TOPS.

Parkway Infinity Edge Tables



20" ROUND OCCASIONAL TABLE
5333-2000-SO SOLID ALUMINUM TOP
 W 20 • D 20 • H 18



20" SQUARE OCCASIONAL TABLE
5333-2020-SO SOLID ALUMINUM TOP
 W 20 • D 20 • H 18



30" X 42" COFFEE TABLE
5333-3042-SO SOLID ALUMINUM TOP
 W 42 • D 30 • H 18



30" X 42" OVAL COFFEE TABLE
5334-3042-SO SOLID ALUMINUM TOP
 W 42 • D 30 • H 18



24" X 30" CAFE TABLE
5331-2430-SO SOLID ALUMINUM TOP
 W 30 • D 24 • H 28.5



36" ROUND BAR TABLE
5337-3600-SO SOLID ALUMINUM TOP
5338-3600-SO SOLID ALUMINUM UMBRELLA TOP
 W 35.25 • D 35.25 • H 39
30" ROUND BAR TABLE
5337-3000-SO SOLID ALUMINUM TOP
 W 29 • D 29 • H 39



42" SQUARE DINING TABLE
5331-4242-SO SOLID ALUMINUM TOP
5332-4242-SO SOLID ALUMINUM UMBRELLA TOP
 W 42 • D 42 • H 28.5
36" SQUARE DINING TABLE
5331-3636-SO SOLID ALUMINUM TOP
5332-3636-SO SOLID ALUMINUM UMBRELLA TOP
 W 36 • D 36 • H 28.5
30" SQUARE DINING TABLE
5331-3131-SO SOLID ALUMINUM TOP
 W 30.75 • D 30.75 • H 28.5



36" SQUARE BAR TABLE
5337-3636-SO SOLID ALUMINUM TOP
5338-3636-SO SOLID ALUMINUM UMBRELLA TOP
 W 36 • D 36 • H 39
36" X 79" BAR TABLE
5337-3679-SO SOLID ALUMINUM TOP
5338-3679-SO SOLID ALUMINUM UMBRELLA TOP
 W 79 • D 36 • H 39
 ALSO AVAILABLE:
42" X 76" DINING TABLE
5335-4276-SO SOLID ALUMINUM TOP
5336-4276-SO SOLID ALUMINUM UMBRELLA TOP
 W 76 • D 42 • H 28.5



54" ROUND DINING TABLE
5335-5400-SO SOLID ALUMINUM TOP
5336-5400-SO SOLID ALUMINUM UMBRELLA TOP
 W 53.5 • D 53.5 • H 28.5
42" ROUND DINING TABLE
5331-4200-SO SOLID ALUMINUM TOP
5332-4200-SO SOLID ALUMINUM UMBRELLA TOP
 W 41 • D 41 • H 28.5
36" ROUND DINING TABLE
5331-3600-SO SOLID ALUMINUM TOP
5332-3600-SO SOLID ALUMINUM UMBRELLA TOP
 W 35.25 • D 35.25 • H 28.5
30" ROUND DINING TABLE
5331-3000-SO SOLID ALUMINUM TOP
 W 29 • D 29 • H 28.5

ALUMINUM TOP




SOLID (SO)

AVAILABLE IN ALL FINISHES.
 AVAILABLE WITH SOLID ALUMINUM TOP.

Pasadena Cushion

Designed by John Caldwell



A photograph of an outdoor patio area. In the foreground, a swimming pool with clear blue water is visible, bordered by a decorative tile pattern. A concrete patio extends from the pool, featuring a dark metal sofa with white cushions and a matching armchair on a swivel base. A small round table with two blue glass bottles sits between the sofa and the chair. The background is filled with lush green trees and a yellow wall with a black metal gate.

In 2016, award-winning designer John Caldwell created Pasadena Cushion and Pasadena Sling, nodding to the brand's mid-century California roots and unrivaled 80 years of expertise in aluminum.



Pasadena Cushion



5300-6000 LOUNGE CHAIR
W 28.25 • D 35 • H 35 • SH 18.5 • AH 22.5



5300-5300 SWIVEL MOTION LOUNGE CHAIR
W 28.25 • D 34.75 • H 35 • SH 18.5 • AH 22.5



5300-6100 OTTOMAN
W 26.75 • D 24.5 • H 17 • SH 17



5300-6200 LOVESEAT
W 52 • D 35 • H 35 • SH 18.5 • AH 22.5



5300-6300 SOFA
W 76.25 • D 35 • H 35 • SH 18.5 • AH 22.5

AVAILABLE IN ALL FINISHES.


AVAILABLE WITH ALL SUNCLOTH FABRIC AND VERSATEX SLING.

COORDINATES WITH PASADENA SLING ON PG. 80

Pasadena Sling

Designed by John Caldwell





In 2015, award-winning designer John Caldwell created the Pasadena Sling, nodding to the brand's mid-century California roots and unrivaled 80 years of expertise in aluminum.

Pasadena Padded Sling



5240-2000 ARM CHAIR

W 24.25 • D 29 • H 34 • SH 18 • AH 24.25



5240-1000 SIDE CHAIR

W 22.5 • D 29 • H 34 • SH 18



5240-4600 SWIVEL ROCKER

W 24.25 • D 29 • H 34 • SH 18 • AH 24.25



5240-3500 BARSTOOL WITH ARMS

W 24.25 • D 28 • H 44.5 • SH 28.5 • AH 34.75



5240-350B COUNTER HEIGHT STOOL WITH ARMS

W 24.25 • D 28 • H 41 • SH 25.5 • AH 31.25



5240-5000 LOUNGE CHAIR

W 28.25 • D 33.5 • H 34.5 • SH 16.5 • AH 22.5



5240-5300 SWIVEL MOTION LOUNGE CHAIR

W 28.25 • D 33.25 • H 34.25 • SH 16.5 • AH 22.5



5240-5100 OTTOMAN

W 26.75 • D 22.25 • H 15.5 • SH 15.5



5240-7000 STACKING ADJUSTABLE CHAISE

W 31.25 • D 81.5 • H 46.25 • SH 18 • AH 22.5

AVAILABLE IN ALL FINISHES.
AVAILABLE IN VERSATEX SLING.

Pasadena Sling



5190-2000 ARM CHAIR
W 24.25 • D 29 • H 33.5 • SH 17.5 • AH 24.25



5190-1000 SIDE CHAIR
W 22.5 • D 29 • H 33.5 • SH 17.5



5190-4600 SWIVEL ROCKER
W 24.25 • D 29 • H 33.5 • SH 17.5 • AH 24.25



5190-3500 BARSTOOL WITH ARMS
W 24.25 • D 28 • H 44 • SH 28 • AH 34.75



5190-350B COUNTER HEIGHT STOOL WITH ARMS
W 25 • D 28 • H 41 • SH 25 • AH 32



5190-5000 LOUNGE CHAIR
W 28.25 • D 33.5 • H 34 • SH 16 • AH 22.5



5190-5300 SWIVEL MOTION LOUNGE CHAIR
W 28.25 • D 33.25 • H 33.75 • SH 16 • AH 22.5



5190-5100 OTTOMAN
W 26.75 • D 22.5 • H 15 • SH 15



5190-7000 STACKING FLAT ADJUSTABLE CHAISE
W 31.25 • D 81.5 • H 46 • SH 17.5 • AH 22.5

AVAILABLE IN ALL FINISHES.
AVAILABLE IN VERSATEX SLING.

Pasadena Tables



21" RD OCCASIONAL TABLE
5193-2100 GLASS TOP
5193-2100-NO NOVA ALUMINUM TOP
5193-2100-PY PYLON ALUMINUM TOP
5193-2100-SO SOLID ALUMINUM TOP
W 24.75 • D 24.75 • H 18



28" SQ CORNER TABLE
5193-2828 GLASS TOP
5193-2828-NO NOVA ALUMINUM TOP
5193-2828-PY PYLON ALUMINUM TOP
5193-2828-SO SOLID ALUMINUM TOP
W 27.5 • D 27.5 • H 18



28" X 45" RECT COFFEE TABLE
5193-2845 GLASS TOP
5193-2845-NO NOVA ALUMINUM TOP
5193-2845-PY PYLON ALUMINUM TOP
5193-2845-SO SOLID ALUMINUM TOP
W 27.5 • D 44.5 • H 18



42" RD CHAT TABLE
5193-4200 GLASS TOP
5193-4200-NO NOVA ALUMINUM TOP
5193-4200-PY PYLON ALUMINUM TOP
5193-4200-SO SOLID ALUMINUM TOP
W 44.5 • D 44.5 • H 20.25



42" RD DINING TABLE
5191-4200 GLASS TOP
5191-4200-NO NOVA ALUMINUM TOP
5192-4200-NO NOVA ALUMINUM UMBRELLA TOP
5191-4200-PY PYLON ALUMINUM TOP
5192-4200-PY PYLON ALUMINUM UMBRELLA TOP
5191-4200-SO SOLID ALUMINUM TOP
5192-4200-SO SOLID ALUMINUM UMBRELLA TOP
W 44.5 • D 44.5 • H 29.25



54" RD DINING TABLE
5191-5400 GLASS TOP
5191-5400-NO NOVA ALUMINUM TOP
5192-5400-NO NOVA ALUMINUM UMBRELLA TOP
5191-5400-PY PYLON ALUMINUM TOP
5192-5400-PY PYLON ALUMINUM UMBRELLA TOP
5191-5400-SO SOLID ALUMINUM TOP
5192-5400-SO SOLID ALUMINUM UMBRELLA TOP
W 57 • D 57 • H 29.25

Pasadena Tables



45" X 79" RECT DINING TABLE
 5191-4579 GLASS TOP
 5191-4579-NO NOVA ALUMINUM TOP
 5192-4579-NO NOVA ALUMINUM UMBRELLA TOP
 5191-4579-PY PYLON ALUMINUM TOP
 5192-4579-PY PYLON ALUMINUM UMBRELLA TOP
 5191-4579-SO SOLID ALUMINUM TOP
 5192-4579-SO SOLID ALUMINUM UMBRELLA TOP
 W 44.5 • D 79.5 • H 29.25



45" X 99" RECT DINING TABLE
 5191-4599 GLASS TOP
 5191-4599-NO NOVA ALUMINUM TOP
 5192-4599-NO NOVA ALUMINUM UMBRELLA TOP
 5191-4599-PY PYLON ALUMINUM TOP
 5192-4599-PY PYLON ALUMINUM UMBRELLA TOP
 5191-4599-SO SOLID ALUMINUM TOP
 5192-4599-SO SOLID ALUMINUM UMBRELLA TOP
 W 44.5 • D 99.5 • H 29.25



52" X 80" RECT DINING TABLE
 2941-5280-C GLASS TOP
 2942-5280-C GLASS UMBRELLA TOP
 2941-5280-SG GLASS TOP
 2942-5280-SG GLASS UMBRELLA TOP
 W 52 • D 80 • H 29.5



52" X 103" RECT DINING TABLE
 2941-5203-C GLASS TOP
 2942-5203-C GLASS UMBRELLA TOP
 2941-5203-SG GLASS TOP
 2942-5203-SG GLASS UMBRELLA TOP
 W 52 • D 103 • H 29.5



42" RD COUNTER TABLE
 519B-4200 GLASS TOP
 519B-4200-NO NOVA ALUMINUM TOP
 519B-4201-NO NOVA ALUMINUM UMBRELLA TOP
 519B-4200-PY PYLON ALUMINUM TOP
 519B-4201-PY PYLON ALUMINUM UMBRELLA TOP
 519B-4200-SO SOLID ALUMINUM TOP
 519B-4201-SO SOLID ALUMINUM UMBRELLA TOP
 W 44.5 • D 44.5 • H 36.25



42" RD BAR TABLE
 5197-4200 GLASS TOP
 5197-4200-NO NOVA ALUMINUM TOP
 5198-4200-NO NOVA ALUMINUM UMBRELLA TOP
 5197-4200-PY PYLON ALUMINUM TOP
 5198-4200-PY PYLON ALUMINUM UMBRELLA TOP
 5197-4200-SO SOLID ALUMINUM TOP
 5198-4200-SO SOLID ALUMINUM UMBRELLA TOP
 W 44.5 • D 44.5 • H 39.25

ALUMINUM TOP



NOVA (NO)



PYLON (PY)

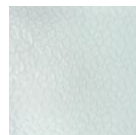


SOLID (SO)

GLASS TOPS



CLEAR (C)



SMOOTH
ROUGH (SR)



SOLAR GRAY
GLASS (SG)

AVAILABLE IN ALL FINISHES.

AVAILABLE WITH ALUMINUM OR GLASS TOPS.

Still

Designed by Richard Frinier



Equal parts modern sculpture and cutting-edge design, Still was created by designer Richard Frinier for Brown Jordan in 2012 and features rounded edges, soft curves, and elegantly tapered legs.





Still



3890-6000 LOUNGE CHAIR
1 LOUNGE CHAIR PILLOW INCLUDED
W 28.5 • D 35 • H 31 • SH 16.5 • AH 20.5



3890-6100 OTTOMAN
W 28.5 • D 24 • H 17.25 • SH 16.5



3890-6300 SOFA
W 92 • D 34.5 • H 30 • SH 16.5 • AH 28



3890-6410 LEFT SECTIONAL
2 RECT. AND 1 SQ. PILLOW INCLUDED
W 57.75 • D 34.5 • H 30 • SH 16.5 • AH 28



3890-6420 RIGHT SECTIONAL
2 RECT. AND 1 SQ. PILLOW INCLUDED
W 57.75 • D 34.5 • H 30 • SH 16.5 • AH 28



3890-6430 ANGLED SECTIONAL
2 RECT. AND 2 SQ. PILLOWS INCLUDED
W 92.5 • D 51 • H 30 • SH 16.5 • AH 28



3890-6460 CENTER ARMLESS SECTIONAL
1 RECT. PILLOW INCLUDED
W 34 • D 34.5 • H 30 • SH 16.5
3890-6450 SECTIONAL OTTOMAN
W 34 • D 34 • H 16.5 • SH 16.5



3890-6440 CORNER SECTIONAL
2 SQ. PILLOWS INCLUDED
W 34.5 • D 34.5 • H 30 • SH 16.5 • AH 28

AVAILABLE IN ALL FINISHES. ALL PANELS ARE AVAILABLE IN VERSATEX OR FLEX SLING.
CUSHIONS AND PILLOWS AVAILABLE IN SUNCLOTH FABRICS.
COORDINATES WITH STILL SLING ON PG. 90

ALSO AVAILABLE

STILL PILLOWS

3890-6000-C101 9" X 21" LOUNGE CHAIR PILLOW


3890-6410-C103 18" X 26" RECTANGULAR PILLOW

3890-6410-C105 18" X 18" SQUARE PILLOW

Still Sling

Designed by Richard Frinier



A photograph of a modern outdoor dining area. In the foreground, a white table is set with wine glasses and plates. A white chair is visible. To the right, a large brick wall with a mix of grey and tan bricks is illuminated by warm light. In the background, a large window reflects the sky and a white wall. The ceiling is made of horizontal wooden slats.

Equal parts modern sculpture and cutting-edge design, Still was created by designer Richard Frinier for Brown Jordan in 2010 and features rounded edges, soft curves, and elegantly tapered legs.



Still Sling



3890-2000 ARM CHAIR
W 25.25 • D 26 • H 32.25 • SH 19.5 • AH 24.5
3890-2000-C98 SEAT CUSHION
3890-1000 SIDE CHAIR
W 22.25 • D 24.5 • H 32.25 • SH 19.5



3890-3600 BAR STOOL WITH ARMS
W 23 • D 24.75 • H 43.25 • SH 30.25 • AH 35.25



3890-3500 BAR STOOL
W 19.5 • D 21.75 • H 30.25



3890-7000 ADJUSTABLE CHAISE
W 34 • D 84 • H 38 • SH 14.5 • AH 17.5
3890-7000-CKIT CUSHION KIT

AVAILABLE IN ALL FINISHES. AVAILABLE IN FLEX SLING. PILLOWS AVAILABLE IN ALL SUNCLOTH FABRICS AND VERSATEX SLING.

ALSO AVAILABLE

STILL PILLOWS

3890-6000-C101 9" X 21" LOUNGE CHAIR PILLOW

3890-6410-C103 18" X 26" RECTANGULAR PILLOW

3890-6410-C105 18" X 18" SQUARE PILLOW



Still Tables



3893-1616-SO SIDE TABLE
W 16 • D 16 • H 20



28" SQUARE OCCASIONAL TABLE
3893-2828-SO SOLID ALUMINUM TOP
W 28.5 • D 28.5 • H 11.25



34" X 58" COFFEE TABLE
3893-3458-SO SOLID ALUMINUM TOP
W 34 • D 58 • H 11.25



36" SQUARE DINING TABLE
3891-3636-SO SOLID ALUMINUM TOP
3892-3636-SO SOLID ALUMINUM UMBRELLA TOP
W 39.25 • D 39.25 • H 29.25



44" SQUARE DINING TABLE
3891-4444-SO SOLID ALUMINUM TOP
3892-4444-SO SOLID ALUMINUM UMBRELLA TOP
W 45.25 • D 45.25 • H 29.25



60" ROUND DINING TABLE
3891-6000-SO SOLID ALUMINUM TOP
3892-6000-SO SOLID ALUMINUM UMBRELLA TOP
W 62.25 • D 62.25 • H 29.25



45" X 99" DINING TABLE
3891-4599-SO SOLID ALUMINUM TOP
3892-4599-SO SOLID ALUMINUM UMBRELLA TOP
W 45.25 • D 99.25 • H 29.25



3899-2448-SO SERVING CART
W 48 • D 24 • H 33

ALUMINUM TOP



SOLID (SO)

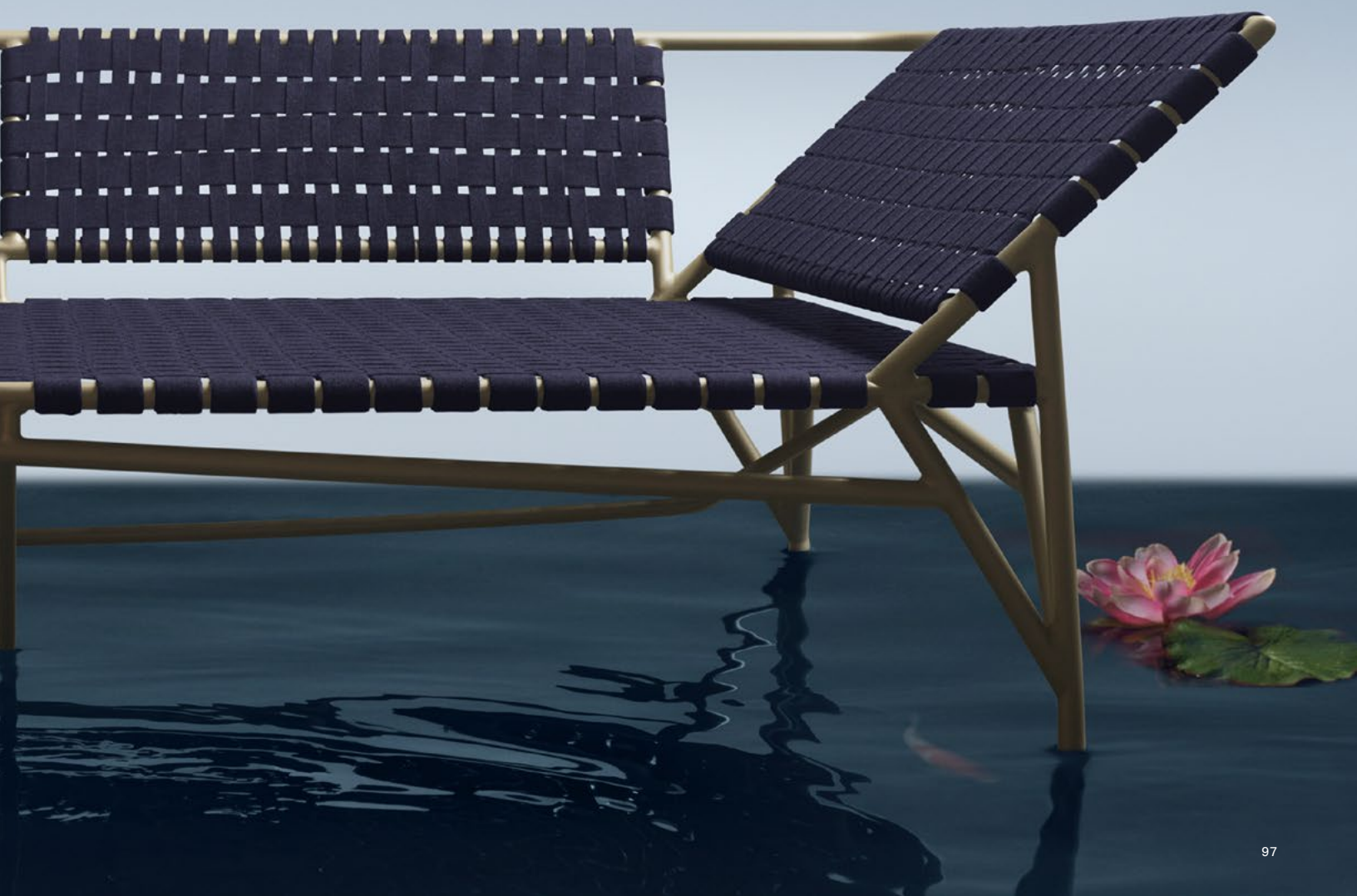
AVAILABLE IN ALL FINISHES.
AVAILABLE WITH A SOLID ALUMINUM TOP.

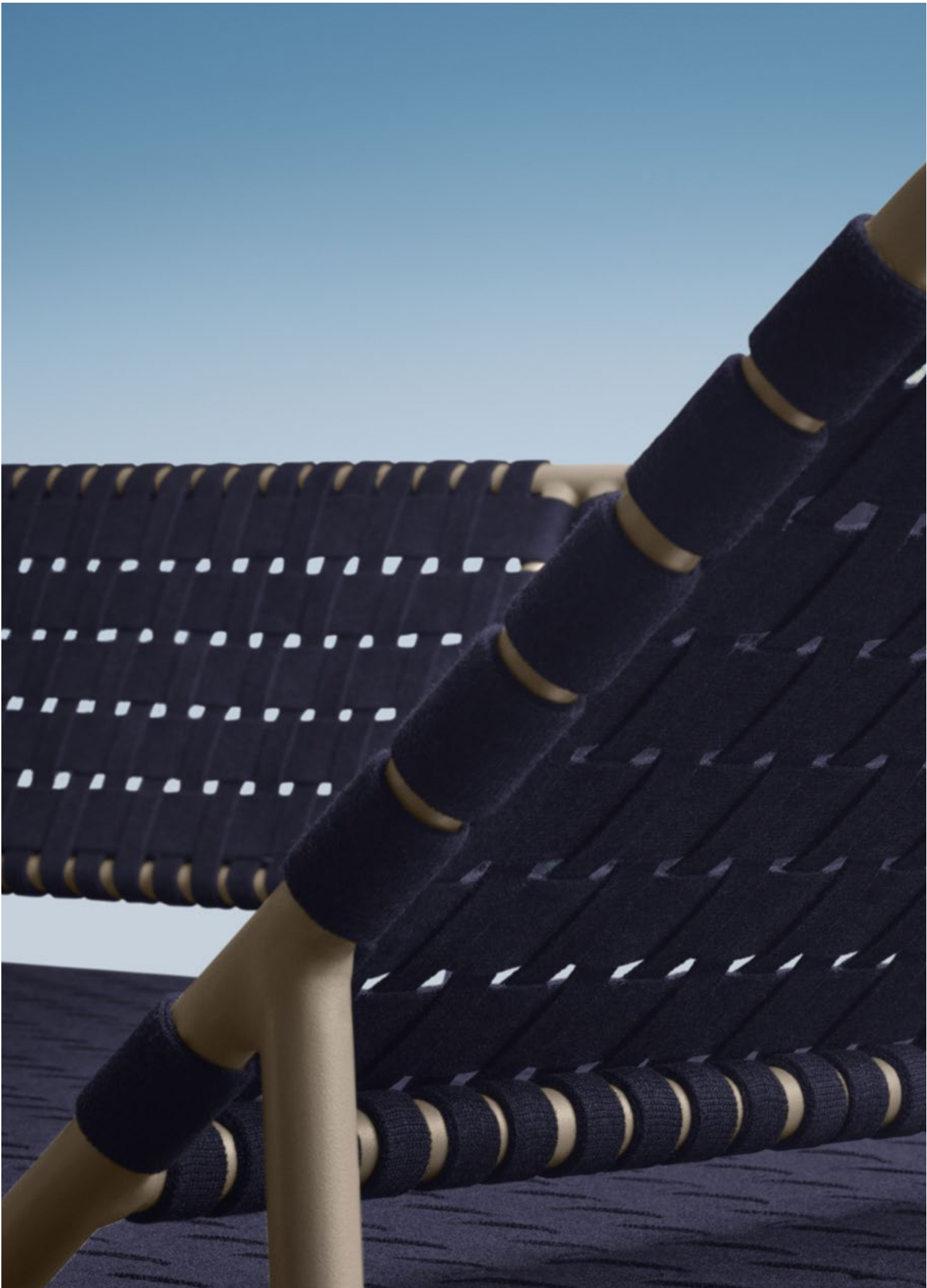
Stretch

Designed by Richard Frinier



Stretch is the iconic designer Richard Frinier's elevated, modern take on vintage strap furniture made with innovative Suncloth straps in two sizes that are woven together in a textural grid.





Stretch



5180-2000 ARM CHAIR
W 23.75 • D 25.5 • H 32.25 • SH 18.25 • AH 25.25



5180-1000 SIDE CHAIR
W 19.75 • D 26.25 • H 32.25 • SH 18.25



5180-5000 LOUNGE CHAIR
W 27.75 • D 29.75 • H 28.25 • SH 14.24 • AH 22.5



5180-6430 ARMLESS LOUNGE CHAIR
W 31.75 • D 32.75 • H 28.25 • SH 14.5



5180-5100 OTTOMAN
W 27.75 • D 26 • H 14.25 • SH 14.25



5180-6450 OTTOMAN
W 31.75 • D 26.25 • H 14.5 • SH 14.5

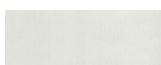


5180-7900 DAYBED
W 92 • D 57 • H 27.25 • SH 17 • AH 27.25



5180-6301 SOFA
W 83.75 • D 29.75 • H 28.25 • SH 14.2 • AH 22.5

1" SUNCLOTH STRAP & 2" SUNCLOTH STRAP COLORS



WHITE



SPA



MICA



COAL



MARINE

AVAILABLE IN ALL FINISHES. AVAILABLE WITH
1" SUNCLOTH STRAP AND 2" SUNCLOTH STRAP.



Stretch Tables



**5184-2020-SO 20" SQUARE
OCCASIONAL TABLE**
W 18.75 • D 18.75 • H 14



5184-3254-SO 32" X 54" COFFEE TABLE
W 54.25 • D 32.25 • H 14



47" SQUARE DINING TABLE
5181-4747-SO SOLID ALUMINUM TOP
5181-4748-SO SOLID ALUMINUM UMBRELLA TOP
W 46.5 • D 46.5 • H 29



47" X 81" DINING TABLE
5181-4781-SO SOLID ALUMINUM TOP
5181-4782-SO SOLID ALUMINUM UMBRELLA TOP
W 80.5 • D 46.5 • H 29

ALUMINUM TOP



SOLID (SO)

AVAILABLE WITH A SOLID ALUMINUM TOP.
POWDERCOAT FINISHES - ALL AVAILABLE.
CAN BE SPECIFIED WITH DIFFERENT TOP
AND FRAME COLORS.

Swim

Designed by Richard Frinier



Distinguished by a slim profile, minimalist proportions, and clean, modern lines, Swim is the sporty, streamlined collection created by celebrated designer Richard Frinier for Brown Jordan in 2011.





Swim



4040-2000 ARM CHAIR
W 31.75 • D 25.25 • H 31.5 • SH 17.75 • AH 25
4040-2000-C99 BACK PILLOW



4040-3500 BARSTOOL WITH ARMS
W 25.25 • D 27 • H 43.25 • SH 29.25 • AH 36.5
4040-350B COUNTER HEIGHT STOOL WITH ARMS
W 25 • D 26.25 • H 39.25 • SH 25.25 • AH 32.5



4040-5000 LOUNGE CHAIR
W 28 • D 28 • H 29 • SH 15.5 • AH 22.5
4040-5000-C99 BACK PILLOW



4040-5100 OTTOMAN
W 29.5 • D 24 • H 17.5 • SH 15.5 • AH 17.5



4040-7000 ADJUSTABLE CHAISE
W 29.5 • D 80.75 • H 44.25 • SH 14

AVAILABLE IN ALL FINISHES. AVAILABLE IN VERSATEX SLING.
PILLOWS AVAILABLE IN ALL SUNCLOTH FABRIC OR VERSATEX SLING.

ALSO AVAILABLE
SWIM PILLOWS
3890-6000-C101 ARM CHAIR BACK PILLOW
3890-6000-C101 LOUNGE CHAIR BACK PILLOW



Swim Tables



4043-1919 19" SQ OCCASIONAL TABLE
W 19 • D 19 • H 15



4043-2727 27" SQ OCCASIONAL TABLE
W 27.25 • D 27.25 • H 15



4043-4545 45" SQ CHAT TABLE
W 45.23 • D 45.25 • H 20

4041-4545 45" DINING TABLE
4042-4545 45" DINING UMBRELLA TABLE
W 45.23 • D 45.25 • H 29



4041-5400 54" RD DINING TABLE
4042-5400 54" RD DINING UMBRELLA TABLE
W 56.75 • D 56.75 • H 29



4041-4579 45" X 79" RECT DINING TABLE
4042-4579 45" X 79" RECT DINING UMBRELLA TABLE
W 45.25 • D 79.25 • H 29



4041-4599 45" X 99" RECT DINING TABLE
4042-4599 45" X 99" RECT DINING UMBRELLA TABLE
W 45.25 • D 99.25 • H 29

ALUMINUM TOP



SOLID (SO)

GLASS TOPS



CLEAR (C)



SMOOTH
ROUGH (SR)

AVAILABLE IN ALL FINISHES. AVAILABLE IN SOLID ALUMINUM.
AVAILABLE IN GLASS TOP CLEAR AND SMOOTH ROUGH.

Venetian

Designed by Richard Frinier



Venetian designer Richard Frinier's neo-classical collection revolutionized the renaissance by replicating the hand-hammered, hand-forged look of heavy wrought iron in zero maintenance wrought aluminum.





Venetian



2250-2000 ARM CHAIR
W 22.75 • D 23.25 • H 35 • SH 20 • AH 24.75



2250-1000 SIDE CHAIR
W 22.5 • D 23 • H 35 • SH 20



2250-3500 BAR STOOL
W 17.5 • D 19 • H 43.5 • SH 31



2250-6000 LOUNGE CHAIR
W 28.25 • D 32.75 • H 34 • SH 19 • AH 22



2250-5300 MOTION LOUNGE CHAIR*
W 28 • D 33 • H 34 • SH 19 • AH 22
*NOT SUITABLE FOR CONTRACT USE.



2250-6100 OTTOMAN
W 27.25 • D 24.25 • H 19 • SH 19



2250-7000 ADJUSTABLE CHAISE
W 27.25 • D 78 • H 40 • SH 19 • AH 20.25

2250-7700 ADJUSTABLE CHAISE WITH WHEELS
W 31.25 • D 78 • H 40 • SH 19 • AH 20.25



2250-6500 LOVESEAT
2 SQ. PILLOWS INCLUDED
W 54.25 • D 32.75 • H 34 • SH 19 • AH 22



2250-6300 SOFA
2 SQ. PILLOWS INCLUDED
W 80.25 • D 32.75 • H 34 • SH 19 • AH 22



2250-6410 LEFT ARM SECTIONAL
W 53.75 • D 32.75 • H 34 • SH 19 • AH 22



2250-6420 RIGHT ARM SECTIONAL
W 53.75 • D 32.75 • H 34 • SH 19 • AH 22



2250-6430 CENTER ARMLESS SECTIONAL
W 53.75 • D 32.75 • H 34 • SH 19



2250-6440 CORNER SECTIONAL
W 32.75 • D 32.75 • H 34 • SH 19

AVAILABLE IN ALL FINISHES. AVAILABLE IN ALL SUNCLOTH
FABRIC AND VERSATEX SLING. CONTRASTING WELT AVAILABLE.

ALSO AVAILABLE

PILLOW

2250-6300-C100 20" X 20" SQUARE PILLOW



Venetian Tables



18" SQUARE OCCASIONAL TABLE
2253-1818 GLASS TOP
 W 18 • D 18 • H 18.25

26" SQUARE CORNER TABLE
2253-2626 GLASS TOP
 W 26 • D 26 • H 18.25



26" X 43" COFFEE TABLE
2253-2643 GLASS TOP
 W 26 • D 43 • H 18.25



44" X 98" DINING TABLE
2251-4498 GLASS TOP
2252-4498 GLASS UMBRELLA TOP
 W 44 • D 98 • H 29.25



30" ROUND DINING TABLE
2255-3000 GLASS TOP
 W 31.75 • D 31.75 • H 29.25



36" ROUND DINING TABLE
2255-3600 GLASS TOP
 W 36.25 • D 36.25 • H 29.25



2257-4272-BA DINING TABLE BASE
42" X 78"
 W 36 • D 68 • H 27.5



2254-3600-BA CHAT TABLE BASE
42" ROUND OR SQUARE
 W 30 • D 30 • H 19.5



2257-4800-BA DINING TABLE BASE
36" ROUND
42" ROUND OR SQUARE
54" ROUND
 W 30 • D 30 • H 27.5



48" ROUND DINING TABLE
2255-4800 GLASS TOP
2256-4800 GLASS UMBRELLA TOP
 W 50 • D 50 • H 29.5
60" ROUND DINING TABLE
2251-6000 GLASS TOP
2252-6000 GLASS UMBRELLA TOP
 W 61 • D 61 • H 29.25



SERVING CART*
2259-2650 GLASS TOP
 W 26.25 • D 50 • H 34

*NOT SUITABLE FOR CONTRACT USE.



2259-9801 22" SQUARE PLANTER
 W 22 • L 22 • H 21

GLASS TOPS



CLEAR (C)



SMOOTH
ROUGH (SR)

AVAILABLE IN ALL FINISHES.
 AVAILABLE WITH ALUMINUM OR GLASS TOPS.

Walter Lamb

Designed Exclusively for Brown Jordan



Celebrated for its graceful, free-flowing curves and original use of materials, the Walter Lamb Bronze collection first launched in 1947 and was re-imagined and reissued in elevated, modern materials to celebrate Brown Jordan's 70th anniversary in 2019.





Walter Lamb



5440-2000 ARM CHAIR
W 22 • D 24 • H 33 • SH 18 • AH 25



5440-5000 LOUNGE CHAIR
W 23 • D 33 • H 29 • SH 14



5440-5100 OTTOMAN
W 20 • D 20 • H 10 • SH 10



5440-5400 ROCKING CHAIR
W 24 • D 36 • H 29 • SH 15 • AH 23



5440-7400 CONTOURED CHAISE
W 28 • D 66 • H 32 • SH 13 • AH 20

ROPES



PEBBLE



SPICE



PISTACHIO



PEACOCK



MARINE



COAL

AVAILABLE IN ALL FINISHES AND WALTER LAMB ROPE COLORS.



Walter Lamb Tables



20" ROUND OCCASIONAL TABLE
5444-2000 GLASS TOP
5444-2000-DW NATURAL TOP
5444-2000-EC ELIPSE TOP
5444-2000-LN LUNA TOP
 W 20 • D 20 • H 10



38" X 38" DINING TABLE
5441-3838 GLASS TOP
5441-4377-DW NATURAL TOP
5441-4377-EC ELIPSE TOP
5441-4377-LN LUNA TOP
 W 38 • D 38 • H 28

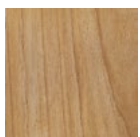


43" X 77" DINING TABLE
5441-4377 GLASS TOP
5441-4377-DW NATURAL TOP
5441-4377-EC ELIPSE TOP
5441-4377-LN LUNA TOP
 W 43 • D 77 • H 28



43" X 97" DINING TABLE
5441-4397-DW NATURAL TOP
 W 43 • D 97 • H 28

TEAK



NATURAL

GLASS TOPS

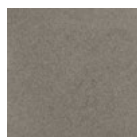


CLEAR (C)

CERAMIC



LUNA



ECLIPSE

AVAILABLE IN ALL FINISHES. AVAILABLE WITH
 NATURAL TEAK, CLEAR GLASS, AND CERAMIC TOPS.

Dining Tables







Adapt Tables



17" RD END TABLE
5633-1700-FS FOSSIL TOP
5633-1700-KN KEON TOP
 W 17 • D 17 • H 29



23" RD END TABLE
5633-2300-FS FOSSIL TOP
5633-2300-KN KEON TOP
 W 23 • D 23 • H 22



28" RD COFFEE TABLE
5634-2800-FS FOSSIL TOP
5634-2800-KN KEON TOP
 W 28 • D 28 • H 16



30" X 40" COFFEE TABLE
5634-3040-FS FOSSIL TOP
5634-3040-KN KEON TOP
 W 30 • D 40 • H 13



30" X 60" COFFEE TABLE
5634-3060-FS FOSSIL TOP
5634-3060-KN KEON TOP
 W 30 • D 60 • H 13



36" X 48" RECTANGLE DINING TABLE
5631-3648-DW NATURAL TOP
5632-3648-DW NATURAL UMBRELLA TOP
5631-3648-FS FOSSIL TOP
5632-3648-FS FOSSIL UMBRELLA TOP
5631-3648-KN KEON TOP
5632-3648-KN KEON UMBRELLA TOP
 W 36 • D 48 • H 28.75



36" X 72" RECTANGLE DINING TABLE
5631-3672-DW NATURAL TOP
5632-3672-DW NATURAL UMBRELLA TOP
5631-3672-FS FOSSIL TOP
5632-3672-FS FOSSIL UMBRELLA TOP
5631-3672-KN KEON TOP
5632-3672-KN KEON UMBRELLA TOP
 W 36 • D 72 • H 28.75

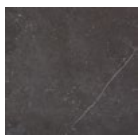


36" X 96" RECTANGLE DINING TABLE
5631-3696-DW NATURAL TOP
5632-3696-DW NATURAL UMBRELLA TOP
5631-3696-FS FOSSIL TOP
5632-3696-FS FOSSIL UMBRELLA TOP
5631-3696-KN KEON TOP
5632-3696-KN KEON UMBRELLA TOP
 W 36 • D 96 • H 28.75

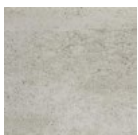


36" X 120" RECTANGLE
5631-3620-DW NATURAL TOP
5632-3620-DW NATURAL UMBRELLA TOP
5631-3620-FS FOSSIL TOP
5632-3620-FS FOSSIL UMBRELLA TOP
5631-3620-KN KEON TOP
5632-3620-KN KEON UMBRELLA TOP
 W 36 • D 120 • H 28.75

TABLETOP



FOSSIL

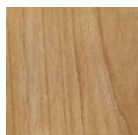


KEON



UMBER

TEAK



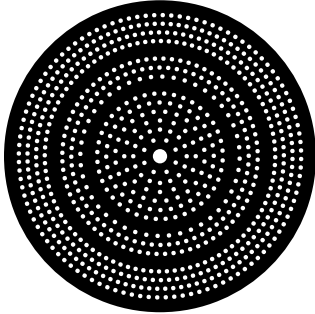
NATURAL

AVAILABLE IN ALL FINISHES. DINING TABLES AVAILABLE IN NATURAL TEAK AND FOSSIL, KEON, OR UMBER CERAMIC. OCCASIONAL TABLES AVAILABLE IN FOSSIL, KEON, OR UMBER CERAMIC.



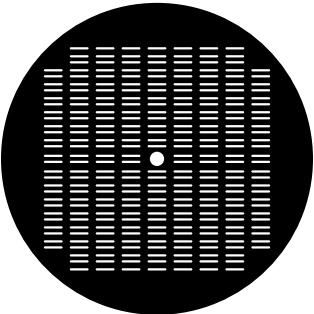
Table Tops | Aluminum

NOVA PERFORATED TOP (NO)



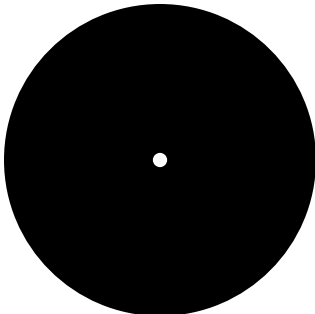
(AVAILABLE ON FLIGHT, FREMONT, PASADENA)

PYLON PERFORATED TOP (PY)



(AVAILABLE ON FLIGHT, FREMONT, PASADENA)

SOLID TOP (SO)



(AVAILABLE ON FLIGHT, FREMONT, KANTAN ALUMINUM, PARKWAY INFINITY EDGE, PASADENA, STILL, STRETCH)

Table Tops | Acrylic and Glass

ROUGH TEX ACRYLIC TOP (RT)



(AVAILABLE ON PARKWAY)

CLEAR GLASS TOP (C)



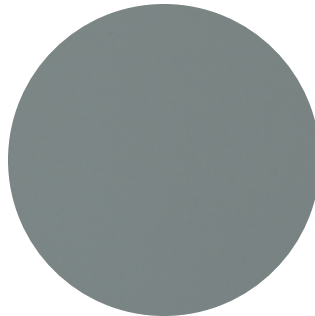
(AVAILABLE ON FLIGHT, PARKWAY AND VENETIAN)

SMOOTH ROUGH GLASS TOP (SR)



(AVAILABLE ON FLIGHT, PARKWAY AND VENETIAN)

SOLAR GREY GLASS TOP (SG)



(AVAILABLE ON PARKWAY)

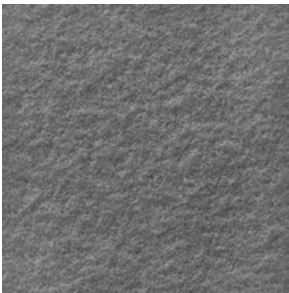
Table Tops | Ceramic and Dekton



ONYX
(AVAILABLE ON H)



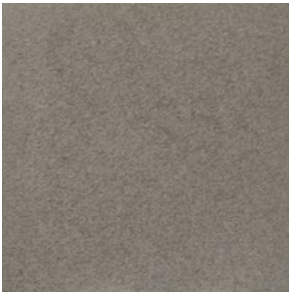
FOSSIL
(AVAILABLE ON ADAPT, MOTO, OSCAR)



SLATE
(AVAILABLE ON H)



KEON
(AVAILABLE ON ADAPT, MOTO, OSCAR)



ECLIPSE
(AVAILABLE ON 20TWENTY, FIRE TABLES, WALTER LAMB)



UMBER
(AVAILABLE ON ADAPT, MOTO, OSCAR)



LUNA
(AVAILABLE ON 20TWENTY, FIRE TABLES, WALTER LAMB)

Table Bases

PARKWAY TABLE BASES



3473-2400-BA OCCASIONAL TABLE BASE
24" ROUND
W 21 • D 21 • H 17.25



3473-3600-BA CHAT TABLE BASE
36" ROUND
42" ROUND OR SQUARE
W 33 • D 33 • H 19.5



3475-4800-BA DINING TABLE BASE
54" ROUND
W 43 • D 43 • H 27.5
3475-3072-BA DINING TABLE BASE
42" X 78"
W 71.5 • D 30 • H 27.5



3477-3600-BA BAR TABLE BASE
36" ROUND
42" ROUND OR SQUARE
W 34 • D 34 • H 37.5

Table Bases

VENETIAN TABLE BASES



2254-3600-BA CHAT TABLE BASE
36" ROUND
42" ROUND OR SQUARE
W 30 • D 30 • H 19.5



2257-4800-BA DINING TABLE BASE
36" ROUND
42" ROUND OR SQUARE
54" ROUND
W 30 • D 30 • H 27.5



2257-4272-BA DINING TABLE BASE
42" X 78"
W 36 • D 68 • H 27.5

Tables



21" ROUND OCCASIONAL TABLE
5193-2100 GLASS TOP
5193-2100-NO NOVA ALUMINUM TOP
5193-2100-PY PYLON ALUMINUM TOP
5193-2100-SO SOLID ALUMINUM TOP
W 24.75 • D 24.75 • H 18



28" SQUARE CORNER TABLE
5193-2828 GLASS TOP
5193-2828-NO NOVA ALUMINUM TOP
5193-2828-PY PYLON ALUMINUM TOP
5193-2828-SO SOLID ALUMINUM TOP
W 27.5 • D 27.5 • H 18



28" X 45" COFFEE TABLE
5193-2845 GLASS TOP
5193-2845-NO NOVA ALUMINUM TOP
5193-2845-PY PYLON ALUMINUM TOP
5193-2845-SO SOLID ALUMINUM TOP
W 27.5 • D 44.5 • H 18



24" X 45" ROUND CHAT UMBRELLA TABLE
3193-2401-SO SOLID ALUMINUM TOP
W 24 • D 24 • H 19



42" ROUND CHAT TABLE
5193-4200 GLASS TOP
5193-4200-NO NOVA ALUMINUM TOP
5193-4200-PY PYLON ALUMINUM TOP
5193-4200-SO SOLID ALUMINUM TOP
W 44.5 • D 44.5 • H 20.25



42" ROUND DINING TABLE
5191-4200 GLASS TOP
5192-4200 GLASS UMBRELLA TOP
5191-4200-NO NOVA ALUMINUM TOP
5192-4200-NO NOVA ALUMINUM UMBRELLA TOP
5191-4200-PY PYLON ALUMINUM TOP
5192-4200-PY PYLON ALUMINUM UMBRELLA TOP
5191-4200-SO SOLID ALUMINUM TOP
5192-4200-SO SOLID ALUMINUM UMBRELLA TOP
W 44.5 • D 44.5 • H 29.25



54" ROUND DINING TABLE
5191-5400 GLASS TOP
5192-5400 GLASS UMBRELLA TOP
5191-5400-NO NOVA ALUMINUM TOP
5192-5400-NO NOVA ALUMINUM UMBRELLA TOP
5191-5400-PY PYLON ALUMINUM TOP
5192-5400-PY PYLON ALUMINUM UMBRELLA TOP
5191-5400-SO SOLID ALUMINUM TOP
5192-5400-SO SOLID ALUMINUM UMBRELLA TOP
W 57 • D 57 • H 29.25

Tables



45" X 79" DINING TABLE
 5191-4579 GLASS TOP
 5192-4579 GLASS UMBRELLA TOP
 5191-4579-NO NOVA ALUMINUM TOP
 5192-4579-NO NOVA ALUMINUM UMBRELLA TOP
 5191-4579-PY PYLON ALUMINUM TOP
 5192-4579-PY PYLON ALUMINUM UMBRELLA TOP
 5191-4579-SO SOLID ALUMINUM TOP
 5192-4579-SO SOLID ALUMINUM UMBRELLA TOP
 W 45.5 • D 79.5 • H 29.25



45" X 99" DINING TABLE
 5191-4599 GLASS TOP
 5192-4599 GLASS UMBRELLA TOP
 5191-4599-NO NOVA ALUMINUM TOP
 5192-4599-NO NOVA ALUMINUM UMBRELLA TOP
 5191-4599-PY PYLON ALUMINUM TOP
 5192-4599-PY PYLON ALUMINUM UMBRELLA TOP
 5191-4599-SO SOLID ALUMINUM TOP
 5192-4599-SO SOLID ALUMINUM UMBRELLA TOP
 W 45.5 • D 99.5 • H 29.25



52" X 80" DINING TABLE
 2941-5280 GLASS TOP
 2942-5280 GLASS UMBRELLA TOP
 W 52 • D 80 • H 29.5



52" X 103" DINING TABLE
 2941-5203 GLASS TOP
 2942-5203 GLASS UMBRELLA TOP
 W 52 • D 103 • H 29.5

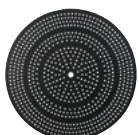


42" ROUND BAR TABLE
 5197-4200 GLASS TOP
 5198-4200 GLASS UMBRELLA TOP
 5197-4200-NO NOVA ALUMINUM TOP
 5198-4200-NO NOVA ALUMINUM UMBRELLA TOP
 5197-4200-PY PYLON ALUMINUM TOP
 5198-4200-PY PYLON ALUMINUM UMBRELLA TOP
 5197-4200-SO SOLID ALUMINUM TOP
 5198-4200-SO SOLID ALUMINUM UMBRELLA TOP
 W 44.5 • D 44.5 • H 39.25



42" COUNTER HEIGHT ROUND TABLE
 519B-4200 GLASS TOP
 519B-4201 GLASS UMBRELLA TOP
 519B-4200-NO NOVA ALUMINUM TOP
 519B-4201-NO NOVA ALUMINUM UMBRELLA TOP
 519B-4200-PY PYLON ALUMINUM TOP
 519B-4201-PY PYLON ALUMINUM UMBRELLA TOP
 519B-4200-SO SOLID ALUMINUM TOP
 519B-4201-SO SOLID ALUMINUM UMBRELLA TOP
 W 44.5 • D 44.5 • H 36.25

ALUMINUM TOP



NOVA (NO)



PYLON (PY)



SOLID (SO)

GLASS TOPS



CLEAR (C)



SMOOTH
ROUGH (SR)



SOLAR GRAY
GLASS (SG)

AVAILABLE IN ALL FINISHES.

AVAILABLE WITH ALUMINUM OR GLASS TOPS

Fire Tables





Fire Tables



44" X 44" SQUARE FIRE TABLE
5623-4444-EC ECLIPSE TOP
5623-4444-LN LUNA TOP
5629-1717 WIND SCREEN FOR
44" SQUARE FIRE TABLES
W 44 • D 44 • H 19.25



34" X 50" RECTANGLE FIRE TABLE
5623-3450-EC ECLIPSE TOP
5623-3450-LN LUNA TOP
5629-1423 WIND SCREEN FOR
34 X 50 RECTANGLE FIRE TABLE
W 34 • D 50 • H 19.25



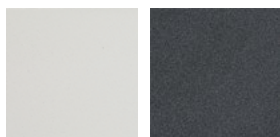
30" X 76" RECTANGLE FIRE TABLE
5623-3076-EC ECLIPSE TOP
5623-3076-LN LUNA TOP
5629-0854 WIND SCREEN FOR
30 X 76 LARGE RECTANGLE FIRE TABLE
W 30 • D 76 • H 19.25

CERAMIC



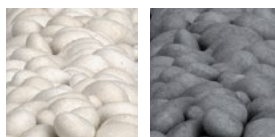
ECLIPSE LUNA

FINISHES



DOVE TEXTURED
PEWTER

FIRE MEDIA



RIVER ROCK SABLE

AVAILABLE IN DOVE OR TEXTURED PEWTER FINISHES.
AVAILABLE WITH ECLIPSE OR LUNA CERAMIC.
AVAILABLE WITH RIVER ROCK OR SABLE FIRE MEDIA.

Furniture Covers



ARM CHAIR COVER



BAR STOOL COVER



LOUNGE SET COVER



OTTOMAN COVER



CHAISE LOUNGE COVER



SOFA COVER



SECTIONAL UNIT COVER



DINING SET COVER



SQUARE DINING TABLE COVER



ROUND DINING TABLE COVER

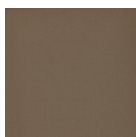


SQUARE BAR TABLE COVER



UMBRELLA COVER

FINISHES



WALNUT



OXFORD

AVAILABLE IN 1316 WALNUT OR 1607 OXFORD.

Juno Poufs







Juno Poufs



5660-2000-QSH 20" RD STOOL
W 20 • D 20 • H 19.3



5660-2000-BSF 20" RD STOOL
W 20 • D 20 • H 19.3



5660-2000-PSD 20" RD STOOL
W 20 • D 20 • H 19.3



5660-2000-PBH 20" RD STOOL
W 20 • D 20 • H 19.3



5660-2000-EPS 20" RD STOOL
W 20 • D 20 • H 19.3



5660-2900-QSH 29" RD OTTOMAN
W 29.1 • D 29.1 • H 16.2



5660-2900-BSF 29" RD OTTOMAN
W 29.1 • D 29.1 • H 16.2



5660-2900-PSD 29" RD OTTOMAN
W 29.1 • D 29.1 • H 16.2



5660-2900-PBH 29" RD OTTOMAN
W 29.1 • D 29.1 • H 16.2



5660-2900-EPS 29" RD OTTOMAN
W 29.1 • D 29.1 • H 16.2

ROPES



PEBBLE BEACH PINK SAND BLUE SURF



QUIET SHADE ESPRESSO

AVAILABLE IN ALL JUNO ROPE COLORS.

Pillows



Pillows



**3950-6300-C108 18" X 18" RELAX PILLOW
WITH CORDLESS WELT**



**3950-6300-C107 22" X 22" RELAX PILLOW
WITH CORDLESS WELT**



**3950-6300-C106 24" X 24" RELAX PILLOW
WITH CORDLESS WELT**



**3950-6300-C105 30" X 30" RELAX PILLOW
WITH CORDLESS WELT**



**3950-6300-C110 14" X 20" RELAX PILLOW
WITH CORDLESS WELT**



**3620-1150-C98 8" X 21" BOLSTER PILLOW
WITH CORDLESS WELT**

ALSO AVAILABLE

20TWENTY PILLOWS

4080-6410-C103 17" X 17" PILLOW

OSCAR PILLOWS

5490-1616-C99 16" X 16" PILLOW WITH FLANGE

5490-2020-C99 20" X 20" PILLOW WITH FLANGE

STILL PILLOWS

3890-6000-C101 9" X 21" BOX PILLOW

3890-6410-C103 18" X 26" BOX PILLOW

3890-6410-C105 18" X 18" BOX PILLOW

SWIM PILLOWS

4040-2000-C99 ARMCHAIR BACK PILLOW - WEDGE

4040-5000-C99 LOUNGE CHAIR BACK PILLOW - WEDGE

VENETIAN PILLOWS

2250-6300-C100 21" X 21" PILLOW W/CORDED WELT

AVAILABLE IN ALL SUNCLOTH FABRIC AND VERSATEX SLING.
CONTRASTING WELT AVAILABLE ON RELAX PILLOWS.

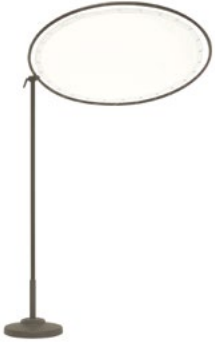
Umbrellas





Umbrellas

SUNSHADES



1390-9605 60" ROUND SUNSHADE
1-1/2" ALUMINUM POLE WITH CLEAR LACE
1390-9605-W 60" ROUND SUNSHADE
1-1/2" ALUMINUM POLE WITH WHITE LACE
RD 60 • H 78

UMBRELLA HOLE COVER



BJ1408-5702 BRASS UMBRELLA HOLE COVER FOR
WOVEN AND TEAK TABLES
RD 4 • H 2

UMBRELLA STANDS



STANDARD UMBRELLA STAND FOR 1-1/2" POLE
1390-9726 65 LB
RD 19 • H 17
1390-9727 95 LB
RD 24 • H 17



STANDARD UMBRELLA STAND FOR 2" POLE
1390-9728 95 LB
RD 24 • H 17



STANDARD UMBRELLA STAND WITH WHEELS
1390-9730 95 LB FOR 1-1/2" POLE
1390-9731 95 LB FOR 2" POLE
RD 25 • H 17

UMBRELLA STAND TABLES



24" CHAT UMBRELLA TABLE
3193-2401 SOLID ALUMINUM TOP
RD 24 • H 19

Umbrellas



SUN CLOUD UMBRELLA

(ALUMINUM POLE AVAILABLE IN ALL FINISHES.)

SHAPE	PULLEY LIFT	SIZE	DIMENSIONS	POLE	VENT
OCTAGON	1390-9845	9'	W 108 • H 101	1.5"	SINGLE
	1390-9846	11'	W 132 • H 105	1.5"	SINGLE
	1390-9847	13'	W 156 • H 109	2"	SINGLE



SUN VEIL UMBRELLA

(ALUMINUM POLE AVAILABLE IN ALL FINISHES.)

SHAPE	PULLEY LIFT	SIZE	DIMENSIONS	POLE	VENT
SQUARE	1390-9848	7'	W 84 • H 101	1.5"	SINGLE



HEX WOOD CONTRACT MARKET UMBRELLA

(AVAILABLE WITH ASH WOOD POLE ONLY.)

SHAPE	MANUAL LIFT	PULLEY LIFT	SIZE	DIMENSIONS	POLE	VENT
HEXAGON	1390-0030-C	1390-0031-C	8'	W 96 • H 102	1.5"	SINGLE

AVAILABLE IN ALL FINISHES.

AVAILABLE IN ALL SUNCLOTH FABRIC AND VERSATEX SLING.

Finishes





BROWN JORDAN

Frame Finishes | Smooth



198 CHALK



89 TITANIUM



113 MICA



207 DAFFODIL



36 AERIS

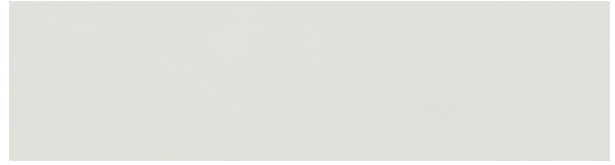


168 LAUREL



14 BLACK JADE

Frame Finishes | Textured



29 DOVE



157 SHADE



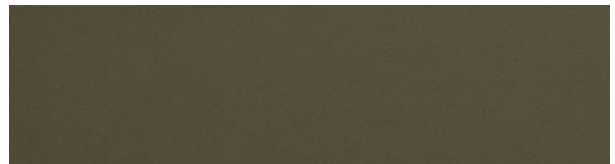
38 BONE



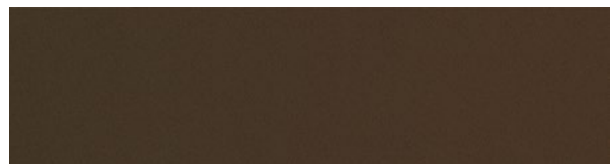
27 BLUSH



39 BAY LEAF



19 LODEN

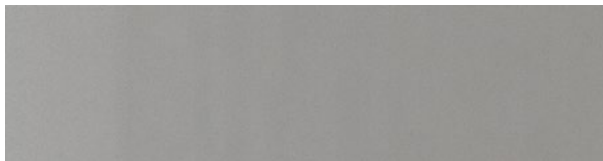


140 POMPEIIAN GOLD

Frame Finishes | Textured



37 ARTIC



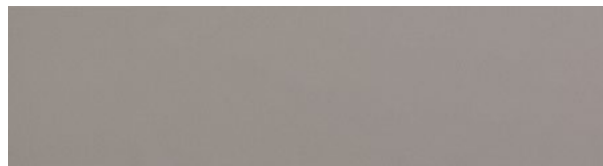
70 PLATINUM



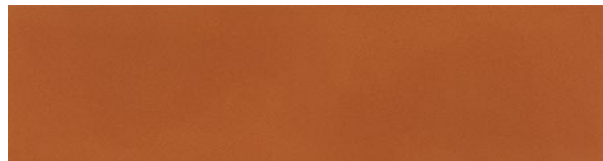
205 SAPPHIRE



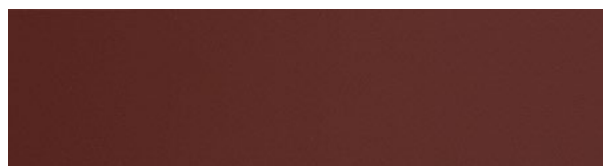
182 TEXTURED PEWTER



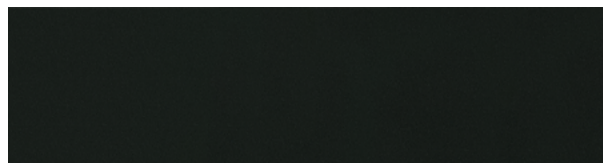
161 STORM



20 AUSTIN



22 ALMANDINE



167 NIGHT

POWDER COATED TO PERFECTION

Every step of the making process is performed with precision and expertise. Metal artisans prepare aluminum frames for powder coating one piece at a time, welding, grinding, buffing, and polishing each seamless joint to what our founder described as “a smooth, jewel like finish.”

Prior to the powder coating process, every frame is pretreated with a five-step application that ensures superior paint adhesion and exceptional cleanliness. Finally, an Ultra Fuse powder coat finish is applied by hand with an electrostatic technique that creates a complete and uniform coating on all areas of the frame, including the bends and corners. No blistering, no flaking, no peeling. Flawless.

Slings







Flex Sling



1483 FLEX SALT AIR (B)



1485 FLEX SANDPIPER (B)



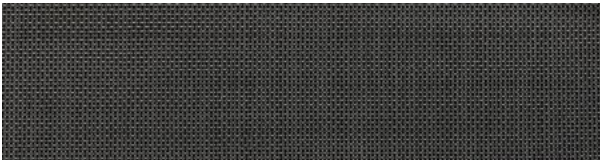
1484 FLEX SAILING (B)



1489 FLEX SHOAL (B)



1488 FLEX CARIBE (B)



1486 FLEX JACKSON (B)

Versatex® Sling



1491 SALT (A)



1014 SALT AIR (A)



543 SANDPIPER (A)



1492 BARLEY (A)



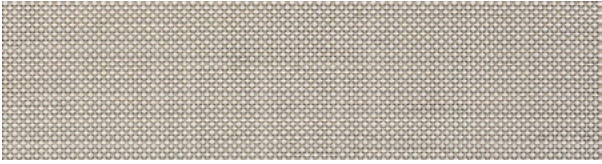
1493 ALMOND (A)



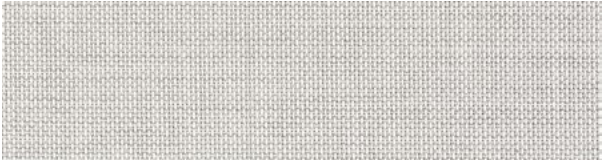
1364 JACKSON (A)



1612 PEARL (B)



1499 CLOUD (B)



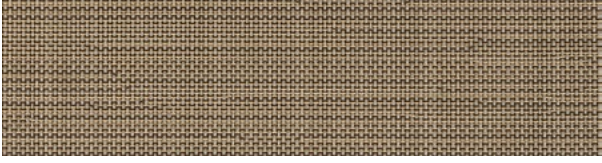
1616 SAIL (B)



1500 SLATE (B)

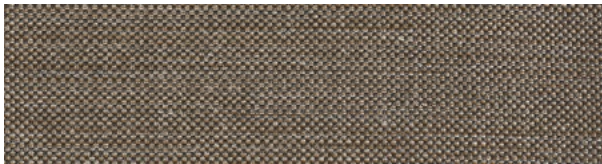


1610 TERRA (B)



1498 FLAGSTONE (B)

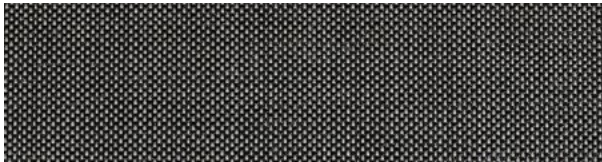
Versatex® Sling



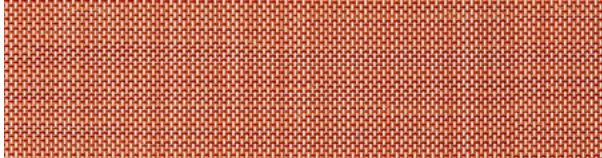
1614 SHALLOW (B)



1613 BIRCH (B)



1617 SHALE (B)



1619 SALMON (B)



1608 WILLOW (B)



1497 LAGOON (B)



1618 AZURE (B)



1609 BERRY (B)



1615 ADMIRAL (B)



1312 SEAL (C)



1304 FOSTER (C)



1311 REEF (C)

Suncloth Fabrics





Suncloth Fabrics | Solids



1553 COTTON (A)



1575 ALABASTER (A)



1539 SNOW WHITE (A)



1530 BERGEN BEIGE (A)



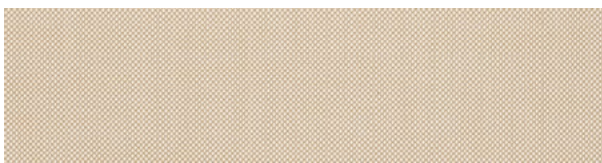
1531 BERGEN STONE (A)



1565 NATURAL (A)



1548 OYSTER (A)



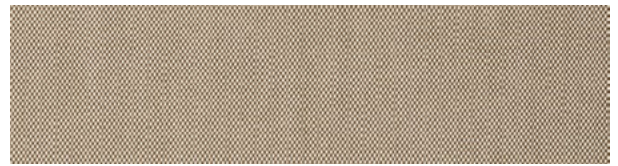
1601 WHEAT (A)



1555 HAZELNUT (A)



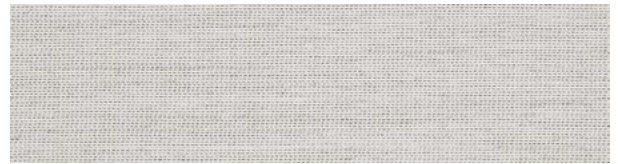
1537 ASGARD HAZELNUT (A)



1544 COBBLESTONE (A)



1598 FAWN (A)



1536 ASGARD ASH (A)



1567 ASH (A)



1545 SMOKE GREY (A)



1546 PEPPER (A)

Suncloth Fabrics | Solids



1566 ADOBE (A)



1568 BEACH (A)



1535 ASGARD WALNUT (A)



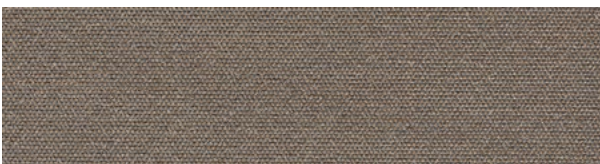
1534 ASGARD MUD (A)



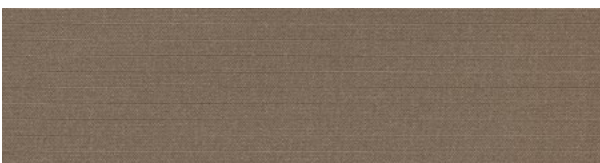
1435 FUSION TAUPE (A)



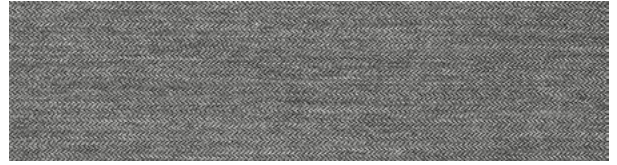
1549 SILVER GREY (A)



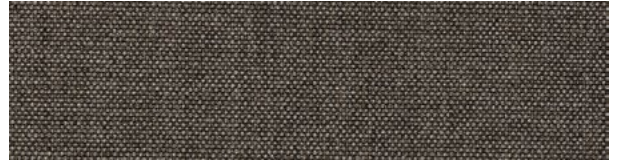
1540 CHESTNUT (A)



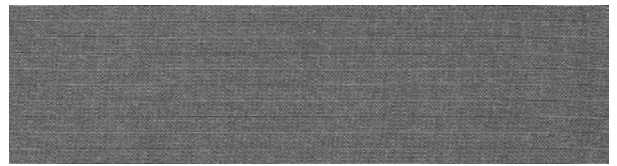
1552 BAY (A)



1533 ASGARD SMOKE (A)



1436 FUSION CHARCOAL (A)



1557 MINERAL (A)



1543 LEAD (A)



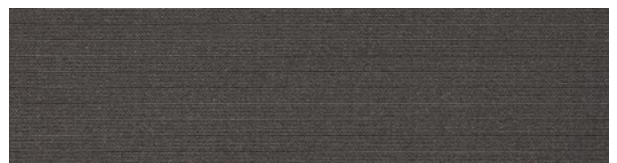
1574 GRAPHITE (A)



1550 SHADOW (A)



1542 BLACK GREY (A)



1556 CARBON (A)

Suncloth Fabrics | Solids



1529 BERGEN CORAL (A)



1599 POMEGRANATE (A)



1532 ASGARD LIMONETTO (A)



1600 OLIVE (A)



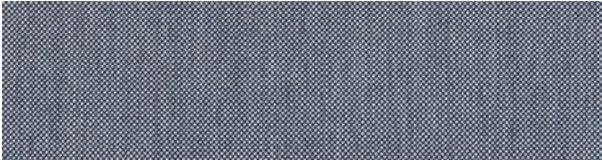
1547 TURQUOISE BLUE (A)



1573 OCEAN (A)



1538 ASGARD DENIM (A)



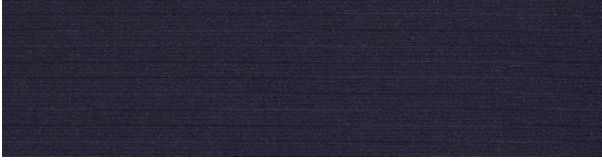
1571 ICE (A)



1541 NAVY (A)



1551 MISTY BLUE (A)



1554 DARK BLUE (A)



1439 FUSION NEPTUNE (A)

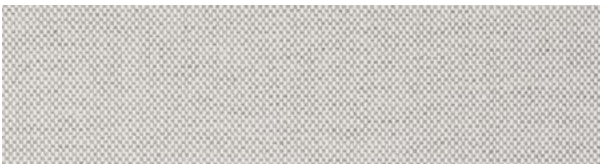
Suncloth Fabrics | Solids



1296 SEA SALT (B)



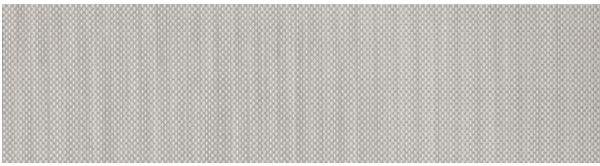
1361 FROST (B)



1467 FUSION DOVE (B)



1294 SAILOR (B)



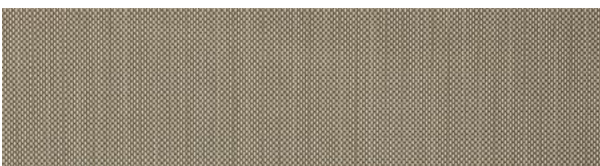
1501 FOG (B)



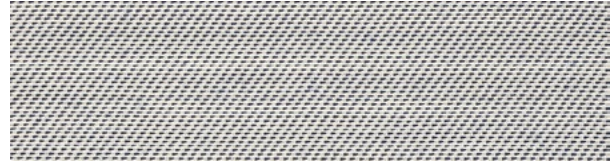
1468 FUSION MEADOW (B)



1388 CASTAWAY (B)



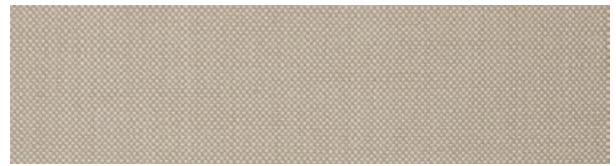
1504 MOSS (B)



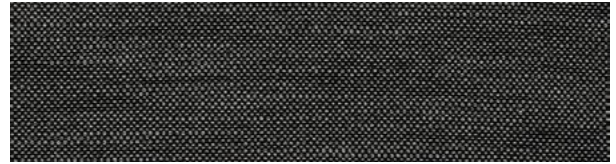
1350 ATLANTIC (B)



1523 CHALK (C)



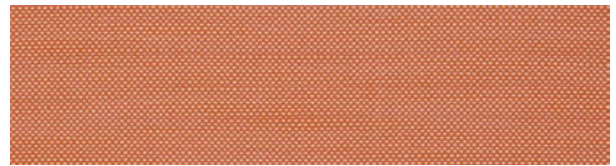
1521 DUNE (C)



1509 ANTHRACITE (C)



1582 DUSTY PINK (C)



1506 MANDARIN (C)

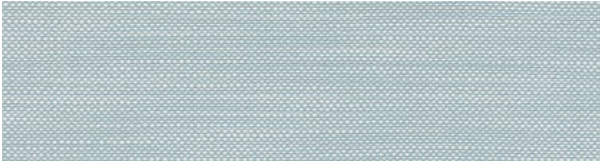


1580 PEA GREEN (C)



1512 POOL SIDE (C)

Suncloth Fabrics | Solids



1578 ARTIC (C)



1515 LAPIS (C)



1588 MELANGE BLEACHED (E)



1586 MELANGE BISQUE (E)



1595 WHITE SANDS (E)



1590 SAVANNAH (E)



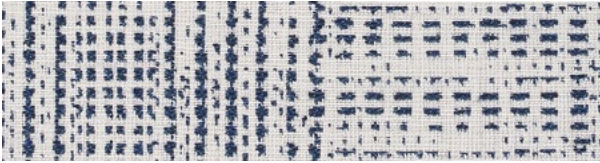
1587 MELANGE HINES (E)



1589 MELANGE ORION GREY (E)



Suncloth Fabrics | Patterned



1459 STATIC NEPTUNE (B)



1283 STATIC (C)



1524 CHALK CIRCLE (E)



1522 DUNE BASKET WEAVE (E)



1519 SEAL BASKET WEAVE (E)



1507 MANDARIN BASKET WEAVE (E)



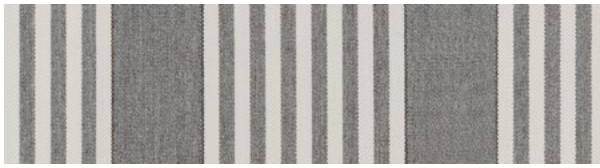
1513 POOL SIDE CIRCLES (E)



1516 LAPIS BASKET WEAVE (E)



Suncloth Fabrics | Stripes



1623 PLATINUM VERSAILLES (B)



1621 MANDARIN VERSAILLES (B)



1622 PEA GREEN VERSAILLES (B)



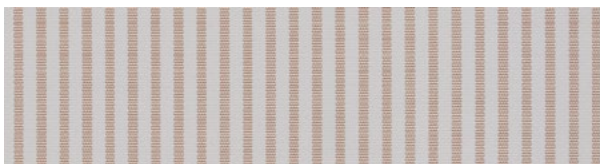
1520 DUNE STRIPE (C)



1585 IRON STRIPE (C)



1508 ANTHRACITE STRIPE (C)



1583 DUSTY PINK STRIPE (C)



1505 MANDARIN STRIPE (C)



1581 PEA GREEN STRIPE (C)



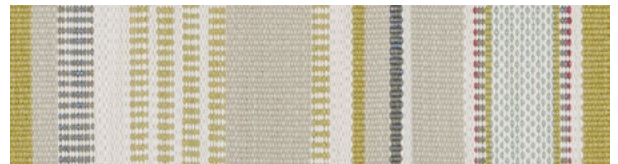
1579 ARTIC STRIPE (C)



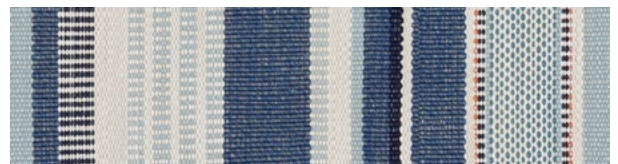
1514 LAPIS STRIPE (C)



1624 DUSTY PINK LEFT BANK (E)

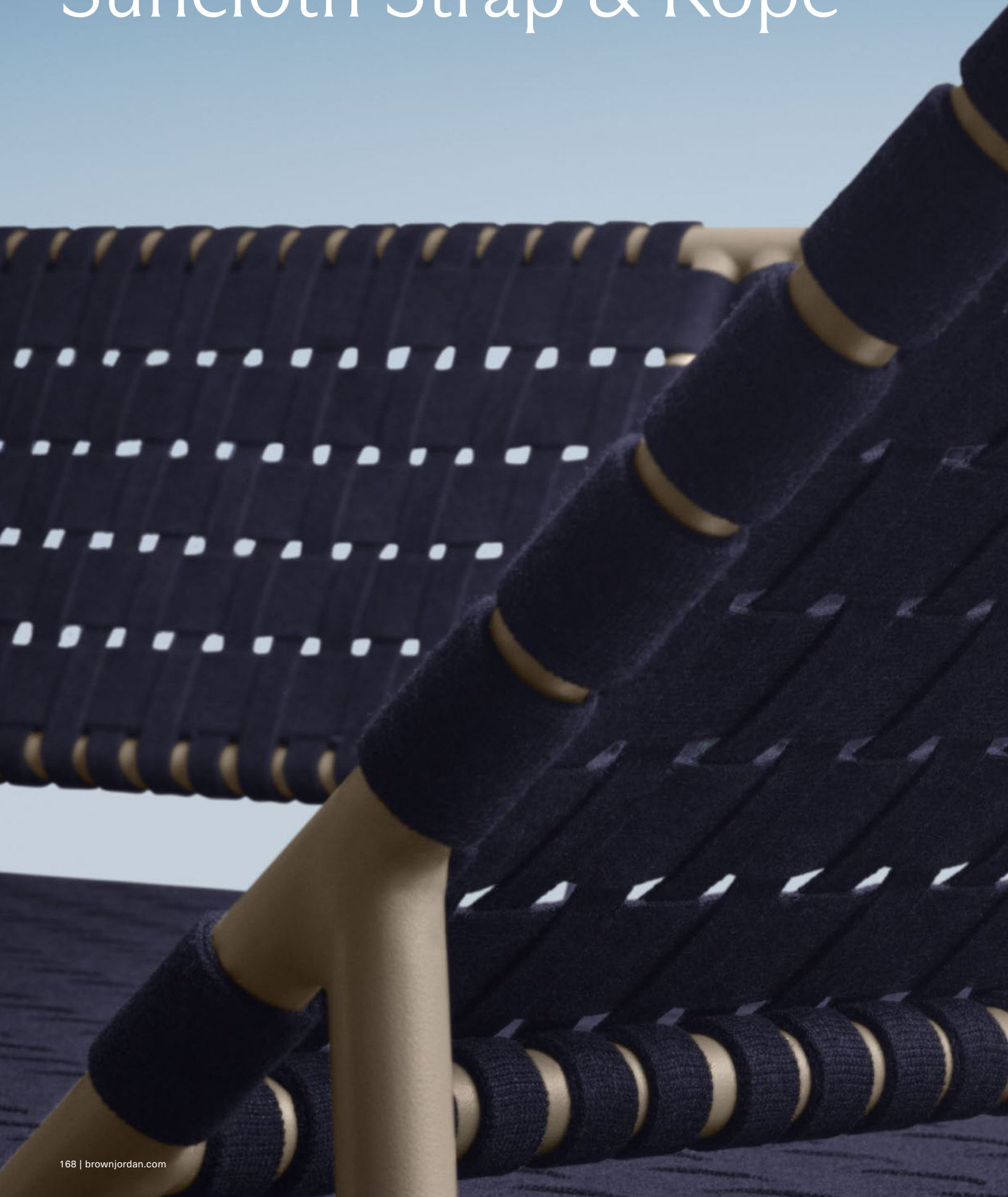


1625 PEA GREEN LEFT BANK (E)



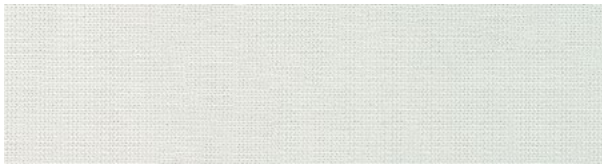
1626 ARTIC LEFT BANK (E)

Suncloth Strap & Rope





Suncloth Straps



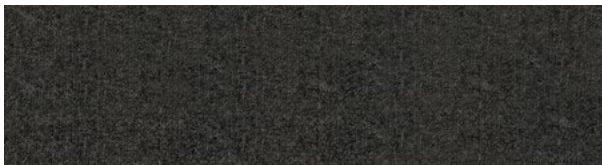
511 WHITE (2") | 510 WHITE (1")



518 SPA (2") | 517 SPA (1")



478 MICA (2") | 480 MICA (1")



477 COAL (2") | 479 COAL (1")



425 MARINE (2") | 453 MARINE (1")

Fiber



BD BLONDE

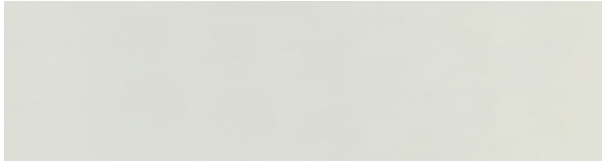


BL BLU



BR BRONZE

Vinyl Straps



447 WHITE LIGHT



495 YELLOW



494 ORANGE



489 HOT PINK



493 RED



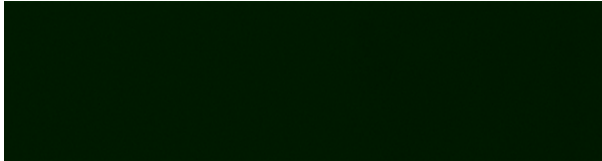
491 BRIGHT GREEN



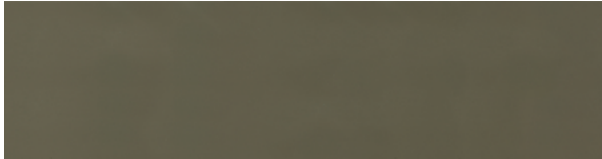
492 BRIGHT BLUE



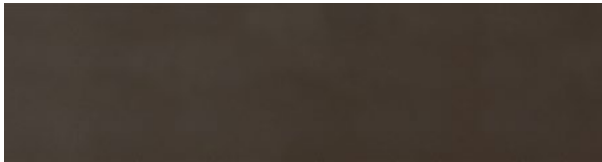
488 MARINE



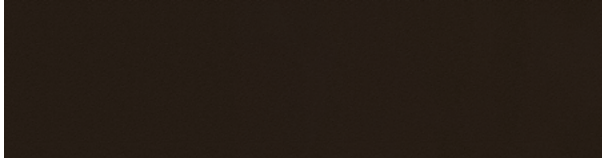
490 DARK GREEN



484 SEA GLASS



483 MICA



255 COFFEE



496 NIGHT

Ropes



0010 ABALONE (H)



0014 LICHEN (H)



PBH PEBBLE BEACH (JUNO)



PSD PINK SAND (JUNO)



BSF BLUE SURF (JUNO)



QSH QUIET SHADE (JUNO)



EPS ESPRESSO (JUNO)



BLF BLUFF (OLIVER)



PCN PEPPERCORN (OLIVER)



0001 PEBBLE (WALTER LAMB) & 0003 PEBBLE (OSCAR)



0012 SPICE (WALTER LAMB)



0013 PISTACHIO (WALTER LAMB)



0011 PEACOCK (WALTER LAMB)



0005 MARINE (WALTER LAMB)



0002 COAL (WALTER LAMB) & 0004 COAL (OSCAR)

Wood



NATURAL TEAK (20TWENTY, WALTER LAMB, AND ADAPT TABLES)

Index

CUSHION

Calcutta	10
Fremont Cushion	22
Moto	50
Parkway Cushion / Modular	64
Pasadena Cushion	76
Still	86
Venetian	108

FIBER

20TWENTY	4
Fusion	32

ROPE

H	38
Oliver	54
Oscar	58
Walter Lamb	114

SLING

Flight Sling	16
Fremont Sling	26
Parkway Sling	70
Pasadena Sling	80
Still Sling	90
Swim	102

STRAP

Kantan Suncloth / Vinyl	44
Stretch	96

DINING TABLES & ACCESSORIES

Dining Tables	120
Fire Tables	132
Furniture Covers	135
Juno	136
Pillows	140
Umbrellas	142

FABRICS & FINISHES

Finishes	146
Slings	150
Suncloth Fabrics	156
Suncloth Strap & Rope	168
Wood	173

BROWN JORDAN

Brown Jordan Atlanta
240 Peachtree Street NW, 3rd Floor
Atlanta, GA 30303
678-238-2758

Brown Jordan Boston
21 Drydock Avenue Suite 110E
Boston, MA 02210
617-206-4144

Brown Jordan Chicago
222 Merchandise Mart Plaza Suite 128
Chicago, IL 60654
312-321-0144

Brown Jordan Costa Mesa
3323 Hyland Avenue
Costa Mesa, CA 92626
949-760-6900

Brown Jordan Dallas
1405 Turtle Creek Boulevard
Dallas, TX 75207
214-651-9509

Brown Jordan High Point
209 South Main Street, M-111
High Point, NC 27260
336-210-1727
(Open by appointment only)

Brown Jordan Miami
3625 NE 2nd Avenue
Miami, FL 33137
305-573-1946

Brown Jordan New York
200 Lexington Ave Suite 301
New York, NY 10016
917-781-3995

Brown Jordan San Francisco
2 Henry Adams Street #160
San Francisco, CA 94103
628-246-1945

Brown Jordan Scottsdale
15345 North Scottsdale Road Suite K190
Scottsdale, AZ 85254
480-998-1142

brownjordan.com [@brownjordan1945](https://twitter.com/brownjordan1945)

Brown Jordan is a registered trademark of Brown Jordan Inc.