

Hanamint Corporation

8010 Thorndike Road, Greensboro, NC 27409
Tel: 336-855-9141 Fax: 336-855-8482
www.hanamint.com



Hanamint[®]

Atlanta Showroom

AmericasMart, 240 Peachtree Street NW
Building 1 Suite 5-A-4
Atlanta, GA 30303



2024 - 2025 Collections



Hanamint®

Hanamint 2025 Collections

Hanamint is pleased to introduce the collections for 2025. As a leader in the casual furniture industry, our team of creative designers and craftsmen strive to bring you collections of exceptional quality and value.



ISO 9001:2008
CERTIFIED FACTORY

These collections of our proven best sellers are sure to enhance the beauty of any outdoor room and provide years of enjoyment.

With over 31 years of experience in the outdoor market, we pledge to continue our strong commitment to quality, outstanding craftsmanship, and the highest standard of customer service.

TABLE OF CONTENTS

Cedar	2	Tuscany.....	32
Cedar Sling & Carlisle Tables	6	Grand Tuscany.....	36
Sydney Sling & Inverness Table ...	8	Westfield.....	38
Mayfair	10	Planters.....	42
Santa Barbara	16	Trash Receptacles	47
New Classic Tables	23	Fire Pit Accessories.....	48
Stratford	24	Umbrella Bases	49
Stratford Sling.....	28	Pillow Fabrics	50
Stools & Benches	30	Cushion Fabrics	52
Sherwood Collection.....	31		

© &™ Hanamint Corporation 2024

Many of the designs and design elements shown are the subject of pending and/or issued patents and copyrights.

Notice: Cushions pictured with furniture are sold separately

CEDAR

Warehouse Finish: Black
Cushion Fabric: 4043300
See page 52 for fabric selections
Carlisle Tables recommended, see page 06

Dining Chair
309111

Swivel Rocker
309341

Carlisle 42" x 76" Rectangular Extension Table,
Expands to 100"
722099





CEDAR

Warehouse Finish: Black
Cushion Fabric: 4043300
See page 52 for fabric selections
Carlisle Tables recommended, see page 06

CEDAR COLLECTION



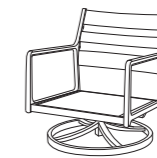
Dining Chair
309111



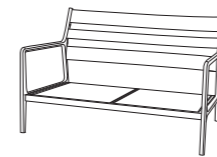
Swivel Rocker
309341



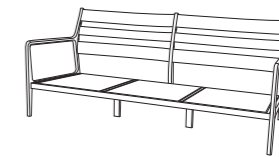
Club Chair
309411



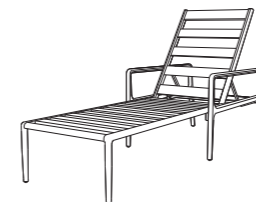
Club Swivel Rocker
309418



Loveseat
309421



Sofa
309431



Chaise Lounge
309331



Ottoman
309451

Black

CEDAR SLING & CARLISLE TABLES

Warehouse Finish: Black
Sling: 5928044

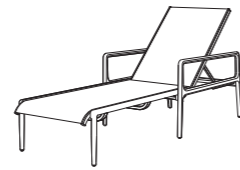
CEDAR SLING COLLECTION & CARLISLE TABLES



Dining Chair
309112



Swivel Rocker
309342



Chaise Lounge
309336



42" x 76" Rectangular Extension Table,
Expands to 100"
722099



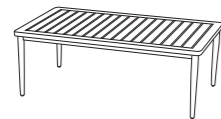
44" x 71" Rectangular Table
722845



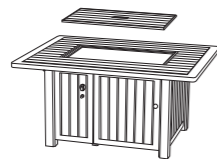
48" Round Table
722548



22" Square
End Table
722622



30" x 52" Rectangular
Coffee Table
722765



37" x 49" Rectangular
Enclosed Gas Fire Pit Table
722090

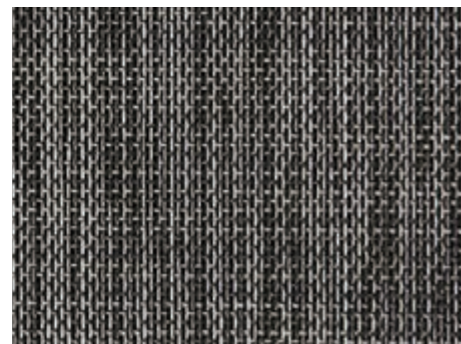


36" Square Pedestal Counter
Height Table - 37" High
722043

36" Square Pedestal Bar Table - 41" High
722053



Augustine Silver
5928044



Augustine Shadow
5928067

Black





SYDNEY SLING & INVERNESS TABLE

Warehouse Finish: Black
Sling: 5928067
Pillow Fabrics: 3150359, 3150357
See page 50 for pillow fabric selections

SYDNEY SLING COLLECTION & INVERNESS TABLE



Dining Chair
317112



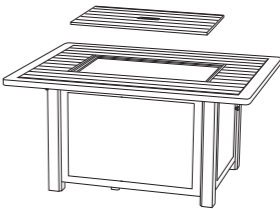
Swivel Rocker
317342



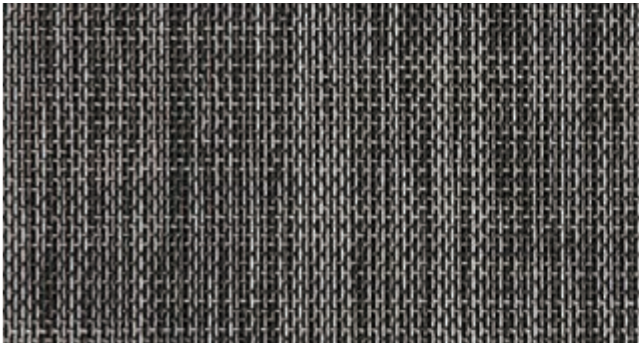
Club Chair
317412



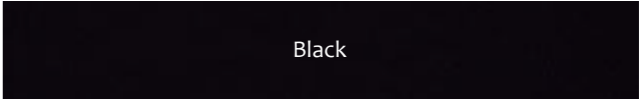
Club Swivel Rocker
317418



37" x 49" Sling Rectangular
Enclosed Gas Fire Pit Table
725090



Augustine Shadow
5928067



Black

MAYFAIR

Warehouse Finish: Desert Bronze

Cushion Fabric: 5476000

See page 52 for fabric selections

Dining Chair

208141

Swivel Rocker

208341

42" x 76" Rectangular Extension Table, Expands to 100"

208081



MAYFAIR

Warehouse Finish: Desert Bronze
Cushion Fabric: 4045600
See page 52 for fabric selections

Estate Club Chair
208411

Estate Club Swivel Rocker
208415

Estate Club Left Chair
208441

Estate Club Right Chair
208443

24" Square End Table
208624

26" x 48" Rectangular Coffee Table
208763





MAYFAIR COLLECTION

Desert Bronze



Dining Chair
208141



Swivel Rocker
208341



Swivel Counter Height Stool
208353



Swivel Bar Stool
208351



Chaise Lounge
208331



Estate Club Chair
208411



Estate Club Swivel Rocker
208415



Estate Club Swivel Glider
208419



Estate Ottoman
208451



Estate Club Right Chair
208443



Estate Club Middle Chair
208445



Estate Club Left Chair
208441



Estate Club Corner Chair
208447

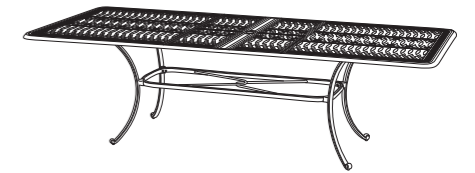


42" Round Coffee Table
208542



48" Round Table
208548

54" Round Inlaid Lazy Susan Table
208084



42" x 76" Rectangular Extension Table,
Expands to 100"
208081

42" x 84" Rectangular Table
208827



24" Round Tea Table
208524



24" Square End Table
208624



26" x 48" Rectangular Coffee Table
208763



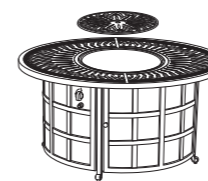
20" Round Ice Bucket Side Table
208010



22" x 32" Rectangular
Ice Bucket Table for Estate Sectional
208011



22" x 28" Rectangular
Counter Height Table
208741



39" x 52" Oval Enclosed Gas Fire Pit Table
208091



16" x 38" Console Table
611806



Tea Cart
613208

48" Round Enclosed Gas Fire Pit Table
208092



54" Round Counter Height
Enclosed Gas Fire Pit Table
208096



30" Round Pedestal
Counter Height Table - 37" High
208032

30" Round Pedestal
Bar Table - 41" High
208042



SANTA BARBARA

Warehouse Finish: Terra Mist

Cushion Fabric: 5407000

See page 52 for fabric selections

New Classic Tables recommended, see page 23

Full Cushion Dining Chair

704117

Full Cushion Swivel Rocker

704347

New Classic 42" x 76" Rectangular Extension Table, Expands to 100"

711081



SANTA BARBARA

Warehouse Finish: Terra Mist
Cushion Fabric: 4042800
See page 52 for fabric selections
New Classic Tables recommended, see page 23

Dining Chair
704116

Swivel Rocker
704346

New Classic 48" Round Table
711548



SANTA BARBARA

Warehouse Finish: Terra Mist
Cushion Fabric: 4045600
See page 52 for fabric selections
New Classic Tables recommended, see page 23

Club Chair
704411

Club Swivel Rocker
704417

Loveseat
704421

New Classic 24" Square End Table
711624

New Classic 28" x 48" Rectangular Coffee Table
711763





NEW CLASSIC TABLES

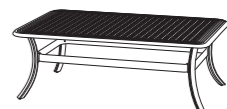
Terra Mist



12" x 18" Tea Table
618



24" Round Tea Table
711524



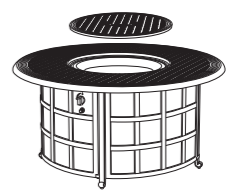
28" x 48" Rectangular Coffee Table
711763



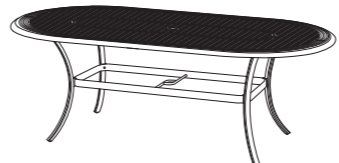
24" Square End Table
711624



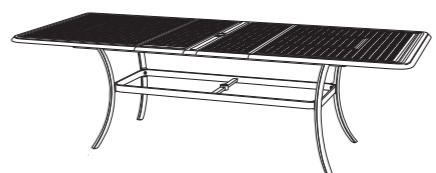
20" Round Ice Bucket Side Table
703010



48" Round Enclosed Gas Fire Pit Table
703091



42" x 84" Oval Table
711927



42" x 76" Rectangular Extension Table, Expands to 100"
711081



48" Round Table
711548

54" Round Inlaid Lazy Susan Table
711084

SANTA BARBARA COLLECTION

Terra Mist



Dining Chair
704116



Swivel Rocker
704346



Full Cushion Dining Chair
704117



Full Cushion Swivel Rocker
704347



Ottoman
704453



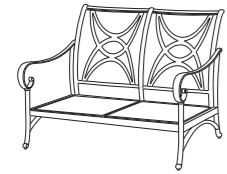
Club Chair
704411



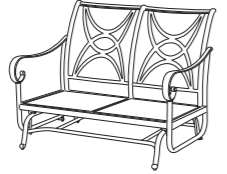
Club Swivel Rocker
704417



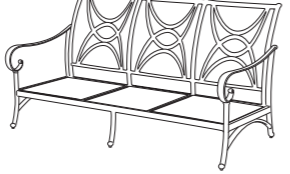
Chaise Lounge
704331



Loveseat
704421



Loveseat Glider
704428



Sofa
704431



42" Round Counter Height Table - 37" High
711035

42" Round Bar Table - 41" High
711600

STRATFORD

Warehouse Finish: Terra Mist
Cushion Fabric: 4045600
See page 52 for fabric selections
Sherwood Tables recommended, see page 31

Dining Chair
247141

Swivel Rocker
247341

Sherwood 44" x 84" Rectangular Table
245847





STRATFORD

Warehouse Finish: Terra Mist
 Cushion Fabric: 2150035
 See page 52 for fabric selections
 Sherwood Tables recommended, see page 31

STRATFORD COLLECTION



Dining Chair
247141



Swivel Rocker
247341



Chaise Lounge
247331



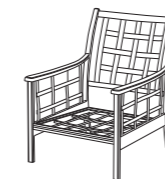
Swivel Counter Height Stool
247353



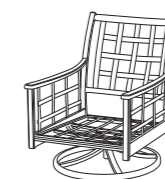
Swivel Bar Stool
247351



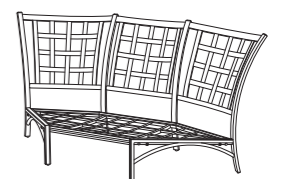
Estate Ottoman
247451



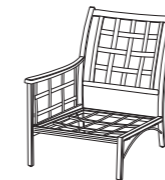
Estate Club Chair
247412



Estate Club Swivel Rocker
247417



Estate Club Corner Chair
247447



Estate Club Right Chair
247444



Estate Club Middle Chair
247445



Estate Club Left Chair
247442

Terra Mist



STRATFORD SLING

Warehouse Finish: Terra Mist
Sling: 5928048
Sherwood Tables recommended, see page 31

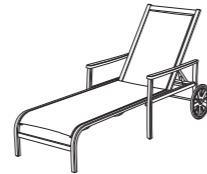
STRATFORD SLING COLLECTION



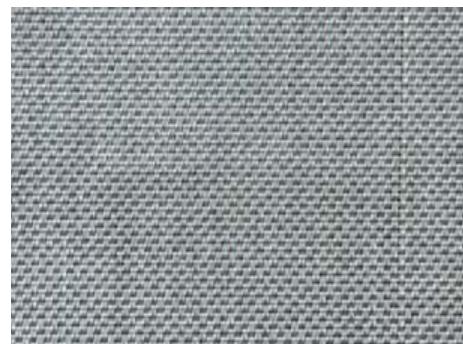
Dining Chair
247142



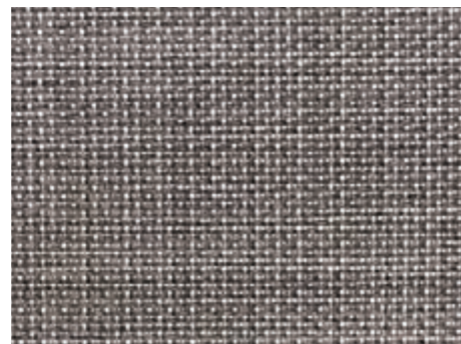
Swivel Rocker
247342



Chaise Lounge
247336



Overcast
1310000



Augustine Pewter
5928048


Terra Mist







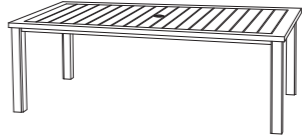
SHERWOOD COLLECTION


Terra Mist

- 


44" Square Table - 29" High
245644
- 


36" Square Counter Height Table - 37" High
245637
- 


36" Square Bar Table - 41" High
245063
- 

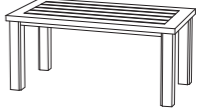
44" x 68" Rectangular Table
245845
- 

44" x 84" Rectangular Table
245847

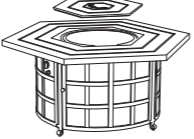
- 

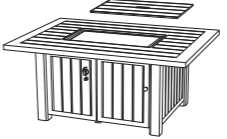
24" Square Ice Bucket Side Table
245010
- 

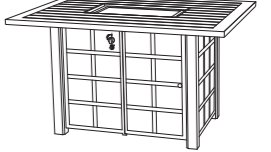
16" x 18" Rectangular Tea Table
245711
- 

24" Square End Table
245624
- 


24" x 48" Rectangular Coffee Table
245743

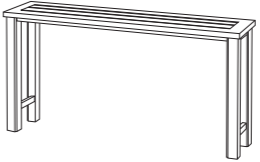
- 

Hexagonal Enclosed Gas Fire Pit Table
245091
- 

39" x 56" Rectangular Enclosed Gas Fire Pit Table
245090
- 

47" x 64" Rect. Counter Height Enclosed Gas Fire Pit Table
245098

- 

16" x 70" Bench
245245
- 

16" x 70" Counter Height Console Table
245715

STOOLS & BENCHES

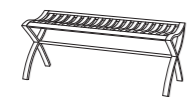
Terra Mist



Counter Stool
263355



Bar Stool
263315



Bench
263215



Counter Height Bench
263216

Black



TUSCANY

Warehouse Finish: Desert Bronze
Cushion Fabric: 4042800
See page 52 for fabric selections

Dining Chair
018130

Hexagonal Inlaid Lazy Susan Table
018067



TUSCANY COLLECTION

Desert Bronze



30" Round Umbrella Side Table - 18" High
018670

30" Round Pedestal Table - 29" High
018410

30" Round Pedestal Counter Height Table - 37" High
018062

30" Round Pedestal Bar Table - 41" High
018690



42" Round Pedestal Table - 29" High
018400

42" Round Pedestal Bar Table - 41" High
018600



21" Round Tea Table
018620



21" Square End Table
048610



21" x 42" Rectangular
Coffee Table
048630



Tea Cart
613118



Dining Chair
018130



Swivel Rocker
018240



Bench
018140



20" Round
Ice Bucket Side Table
018010



20" x 28" Rectangular
Ice Bucket Table
018011



48" Round
Enclosed Gas Fire Pit Table
048091



Towel Rack
611401



Chaise Lounge
018300



Swivel Counter Height Stool
018280



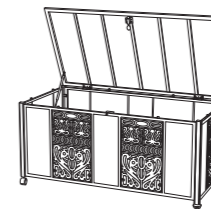
48" Round Table
018450
54" Round Inlaid Lazy Susan Table
018480



16" x 36" Rectangular
Console Table
611803



Baker's Rack
611703



Storage Box
611948



82" Party Bar
613802



Hexagonal Inlaid Lazy Susan Table
018067



42" x 76" Rectangular
Extension Table, Expands to 100"
018081



42" x 90" Rectangular Table
068590



GRAND TUSCANY

Warehouse Finish: Desert Bronze
Cushion Fabric: 4045600
See page 52 for fabric selections

GRAND TUSCANY COLLECTION



Club Chair
048412



Club Swivel Rocker
048410



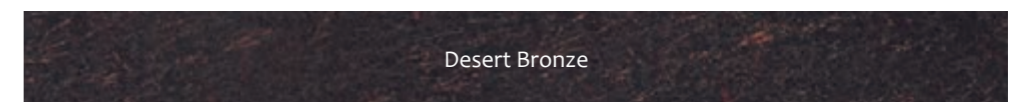
Loveseat
048422



Ottoman
048452



Sofa
048432



Desert Bronze

WESTFIELD

Warehouse Finish: Black
Cushion Fabric: 4043300
See page 52 for fabric selections
Carlisle Tables recommended, see page 06

Dining Chair
248141

Swivel Rocker
248341

Carlisle 42" x 76" Rectangular Extension Table, Expands to 100"
722099



WESTFIELD

Warehouse Finish: Black
Cushion Fabric: 5476000
See page 52 for fabric selections
Carlisle Tables recommended, see page 06

WESTFIELD COLLECTION



Dining Chair
248141



Swivel Rocker
248341



Bench
248211



Swivel Counter Height Stool
248353



Swivel Bar Stool
248351



Chaise Lounge
248331



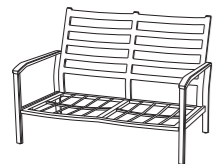
Club Chair
248411



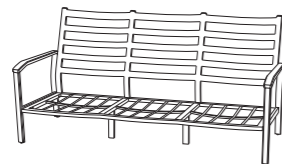
Club Swivel Rocker
248417



Ottoman
248451



Loveseat
248421



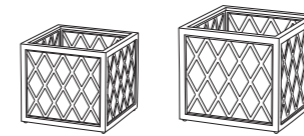
Sofa
248431

Black

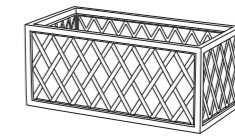




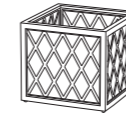
LATTICE PLANTERS



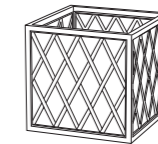
2 Pack Planters (1-18" & 1-24")
611005



18" x 36" Rectangular Planter
611215



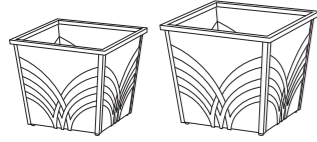
18" Small Square Planter
611213



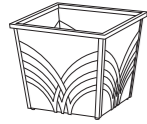
24" Large Square Planter
611214

Terra Mist

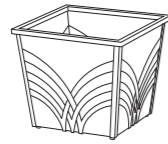
PALM PLANTERS



2 Pack Planters (1-18" & 1-24")
611006



18" Small Square Planter
611220



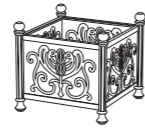
24" Large Square Planter
611221



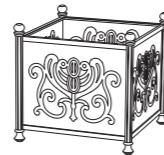
Black



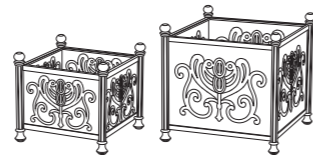
TUSCANY PLANTERS



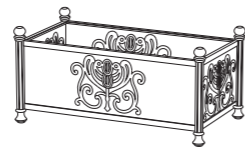
18" Small Square Planter
611210



24" Large Square Planter
611211



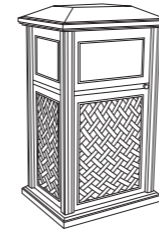
2 Pack Planters (1-18" & 1-24")
611004



18" x 36" Rectangular Planter
611212

Desert Bronze

TRASH RECEPTACLES



Newport Trash Receptacle With Liner - Fully Welded
604011

Terra Mist



Tuscany Trash Receptacle With Liner - Fully Welded
604012

Desert Bronze

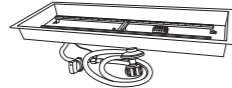




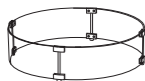
FIRE PIT ACCESSORIES



Round Fire Burner Kit
616615



Rectangular Fire Burner Kit
616617



Round Glass Guard
616619



Rectangular Glass Guard
616621



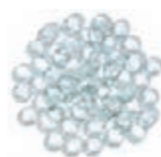
NG Conversion Kit
616690



Amber Fire Glass
616622

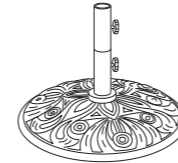


Black Fire Glass
616623

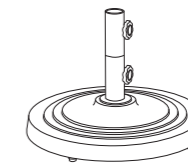
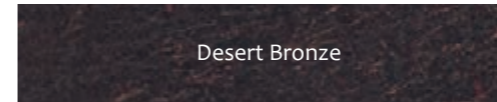


Clear Fire Glass
616624

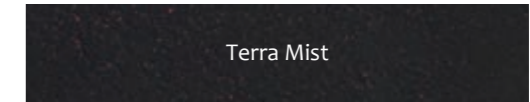
UMBRELLA BASES



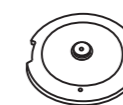
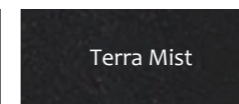
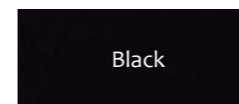
Tuscany Alumiron®
Umbrella Base (50LB)
671548



Alumiron®
Umbrella Base (50LB)
671550



Ventura Cast Iron
Umbrella Base (30LB)
672301



30 LB Add on Weight (Cast Iron)
677301



Alumiron® Base Bottom

Hanamint's original Alumiron® bases ensure your umbrella bases will never rust. The cast iron weight in these bases have been covered with a rust proof cast aluminum decorative shell. These beautifully crafted, original designs are perfect compliments to Hanamint's collections.

PILLOW FABRICS



CUSHION FABRICS

1150092 Hickory

4042800 Cast Ash

2150035 Dove

4043300 Cast Silver

5476000 Canvas Heather Beige

5407000 Canvas Henna

4045600 Cast Lagoon

4808000 Spectrum Indigo

HANAMINT CONSUMER LIMITED WARRANTY

Hanamint Corporation, Inc. ("Hanamint") warrants to the original retail purchaser of Hanamint branded items that in the event the furniture frame fails structurally, other than as the result of abuse or improper use, within ten (10) years from the date of purchase, Hanamint will, at its sole option, replace the part, repair the frame, or replace the entire item. Replacement will be in the original color and style whenever possible; however, equal value replacement will be offered in the event that the original color or style are, for any reason, unavailable. In the event that a defective item is repaired or replaced by Hanamint pursuant to this warranty, the warranty period for the repaired or replacement item shall run from the date of purchase of the original item. Hanamint warrants the powder coat finish against peeling and blistering (but not against fading and wear, as these may be expected due to the nature of hand-applied finishes) for three (3) years from the date of purchase. Some aspects of the Hanamint finishes are hand-applied and some variation in these finishes must be expected and is normal; normal variations in finishes shall not be considered defects and are not covered under this limited warranty. The warranty period for cushions, sling fabrics, gas fire bowls, fire-pit accessories, and other component parts is one (1) year from date of purchase. This limited warranty does not cover damage to fire pits due to excessive heat.

This limited warranty applies to residential use only and only to the original retail purchaser of the product and is not transferable. This limited warranty does not apply to products that are sold "as is" or without warranty (whether or not labeled as such), nor to products sold under terms, e.g., "all sales final" or similar language, that do not allow returns or refunds by the retail buyer to the retail seller. Hanamint does not warrant against damage or failure resulting from acts of nature, commercial use, normal wear and tear, chipping, fading, exposure to harsh chemicals or solvents, abuse, freeze damage, glass breakage, or failure to take reasonable care of the furniture. Hanamint shall not be liable for transit damage to the retail buyer's location. If requested by Hanamint, product(s) must be returned to Hanamint for inspection or a photograph provided to Hanamint or its authorized representative, when requesting warranty parts, warranty replacement or warranty repair. Hanamint shall not be liable for shipping charges either to or from its warehouse on merchandise returned after twelve (12) months from the date of purchase.

Obtaining Warranty Service: To obtain warranty service, you must contact the retailer where the furniture was originally purchased within the relevant warranty period and provide a copy of your dated register receipt as proof of purchase. The receipt or other proof of purchase must be complete and legible with no alterations or cross outs. All warranty issues must be handled through the retailer from which the furniture was originally purchased. Original proof of purchase must accompany all warranty claims.

This warranty is the exclusive statement of your rights with respect to the defects in the items you have purchased and supersedes any other express warranty or statement, written or oral, made in connection with the purchase and sale of such items. Some states do not allow exclusion or limitation of incidental or consequential damages, so these limitations may not apply to you. This warranty gives you specific legal rights and you may have other rights which vary from state to state.

For Care and Maintenance Instructions, please visit www.hanamint.com.

Prices & Shipping

F.O.B. domestic warehouses Henderson, NV or Greensboro, NC

Domestic Terms

Net thirty (30) days on approved credit. A service charge of 1-1/2% per month, 18% per annum, will be added to accounts that are past due over thirty (30) days. Please refer to Hanamint Corporation, Inc. "Terms and Conditions of Sale" for complete details.

Opening Order, Early Buy, and Reorders

Please check with your sales representative for details.

Claims

Shortages, overage, incorrect, or defective merchandise must be reported within thirty (30) days of receipt of shipment. Consignee must make all claims for freight damage with carrier.